

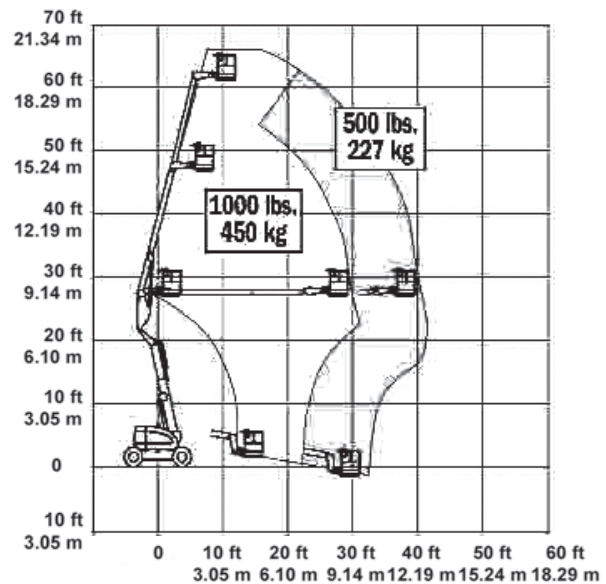
60' JLG KNUCKLE BOOM DIESEL

For more information on this equipment or if you require a free onsite inspection, contact our team

1300 36 2666

BOOM
LOGISTICS

Range Chart



Specifications

Working height	20.10 m
Platform height	18.30 m
Platform size	0.76 x 1.88 m
Safe working load	230 kg
Tailswing	1.22 m
Wheelbase	2.74 m
Gradeability	30 %
Ground clearance (axle)	0.30 m
Drivespeed (stowed)	4.80 km/h
Turning radius (inside)	1.22 m
Turning radius (outside)	4.65 m
Stowed height	2.57 m
Stowed length (jib)	9.37 m
Width	2.44 m
Overall weight (approx.)	6759 kg

www.boomlogistics.com.au