

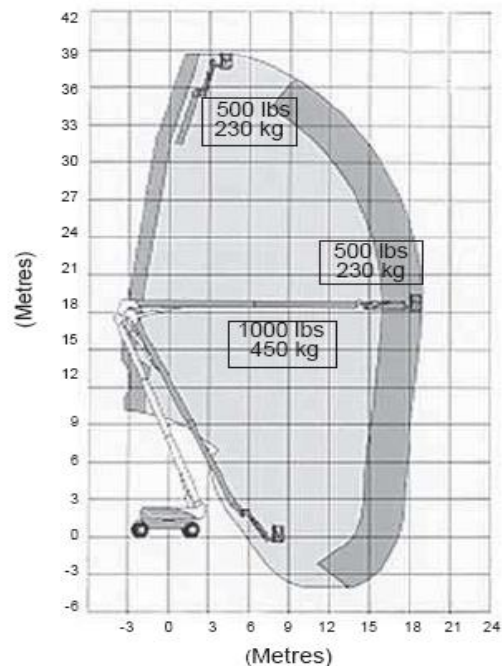
125' JLG KNUCKLE BOOM LIFT

For more information on this equipment or if you require a free onsite inspection, contact our team

1300 36 2666

BOOM
LOGISTICS

Range Chart



Specifications

Working height	39.90 m
Platform height	38.10 m
Platform up-and-over height	18.44 m
Platform size	0.91 x 2.44 m
Safe working load (unrestricted)	450 kg
Safe working load (restricted)	230 kg
Horizontal reach	19.25 m
Turntable rotation	360 ° continuous
Turntable tailswing	0.91 m
Gradeability	45 %
Turning radius (inside - axels ret)	4.39 m
Turning radius (inside - axels ext)	2.44 m
Turning radius (outside - axels ret)	6.86 m
Turning radius (outside - axels ext)	5.89 m
Drivespeed (4WD)	5.2 - 8.30 km/h
Stowed height	3.05 m
Stowed length	11.45 m
Width (axles retracted)	2.49 m
Width (axles extended)	3.81 m
Overall weight (approx.)	19958 kg

www.boomlogistics.com.au