



YOUR EWVP SOLUTIONS GUIDE

BOOM
LOGISTICS

At BOOM Logistics we're much more than just an elevated work platform supplier.

For more than 40 years now we've been offering tailored EWP solutions from a comprehensive equipment fleet Australia-wide; backed by on-call sales and service assistance; reliable solutions and one of the safest working practices in the industry.

GRADEABILITY CONVERSION

| Gradeability | 5% | 10% | 15% | 20% | 25% | 30% | 35% | 40% | 45% | 50% | 55% | 60% |
|--------------|------|------|------|-------|-------|-------|-------|-------|-------|-------|-------|-------|
| Degrees | 2.86 | 5.71 | 8.53 | 11.31 | 14.04 | 16.70 | 19.29 | 21.80 | 24.23 | 26.57 | 28.81 | 30.96 |

PLEASE NOTE

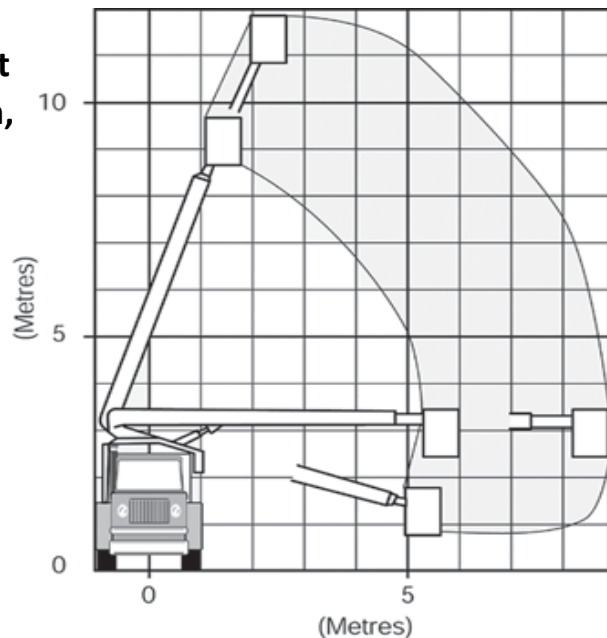
Every effort has been made to accurately specify our equipment in the following pages. Due to availability of equipment actual makes & models supplied may vary from what is indicated. BOOM Logistics specifies "Working Height" as a standard additional height of 6ft (1.8m) above the manufacturer's specified platform height.

12m KNUCKLE BOOM TRAVEL TOWER

Range Chart

For more information on this equipment
or if you require a free onsite inspection,
contact our team

1300 36 2666



Specifications

| | |
|---------------------------------|---------|
| Max working height | 12.00 m |
| Max working radius | 6.50 m |
| Max working radius (max height) | 2.60 m |
| Safe working load | 250 kg |
| Stabiliser spread | 3.80 m |
| Travelling height | 3.00 m |
| Travelling width | 2.42 m |
| Travelling length | 7.80 m |
| Overall weight (approx.) | 7500 kg |

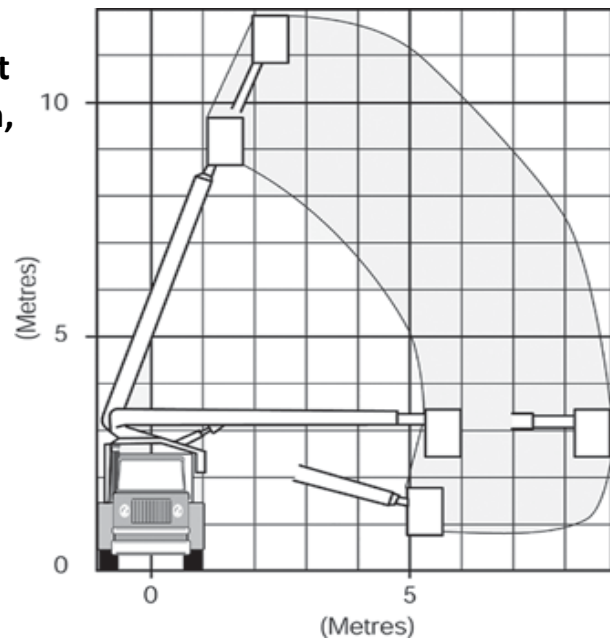
Insulated units available

12m STELCO TELESCOPIC BOOM

For more information on this equipment
or if you require a free onsite inspection,
contact our team

1300 36 2666

Range Chart



Specifications

| | |
|---------------------------------|---------|
| Max working height | 12.00 m |
| Max working radius | 9.00 m |
| Max working radius (max height) | 3.80 m |
| Safe working load | 136 kg |
| Travelling height | 3.30 m |
| Travelling width | 2.20 m |
| Travelling length | 6.40 m |
| Overall weight (approx.) | 7500 kg |

Fitted with hydraulic tool lines

NO STABILISERS

Also available in road rail, STD & wide gauge only

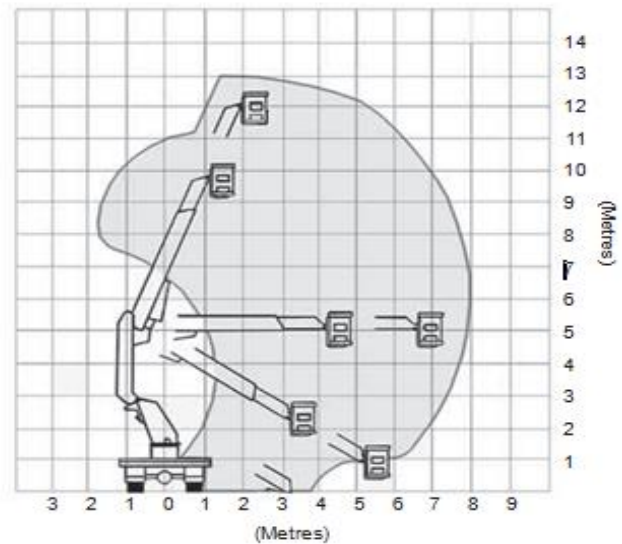
Insulated units available

13m KUNCKLE TELESCOPIC TRAVEL TOWER

Range Chart

For more information on this equipment
or if you require a free onsite inspection
contact our team

1300 36 2666



Specifications

| | |
|---------------------------------|---------|
| Max working height | 13.00 m |
| Max working radius | 7.80 m |
| Max working radius (max height) | 3.00 m |
| Safe working load | 250 kg |
| Travelling height | 3.40 m |
| Travelling width | 2.20 m |
| Travelling length | 6.40 m |
| Overall weight (approx.) | 9000 kg |

Fitted with hydraulic tool lines

Spring locks fitted

Also available in road rail, STD & wide gauge only

Insulated units available

18m GLOVE & BARRIER TRAVEL TOWER

For more information on this equipment
or if you require a free onsite inspection,
contact our team

1300 36 2666

Specifications

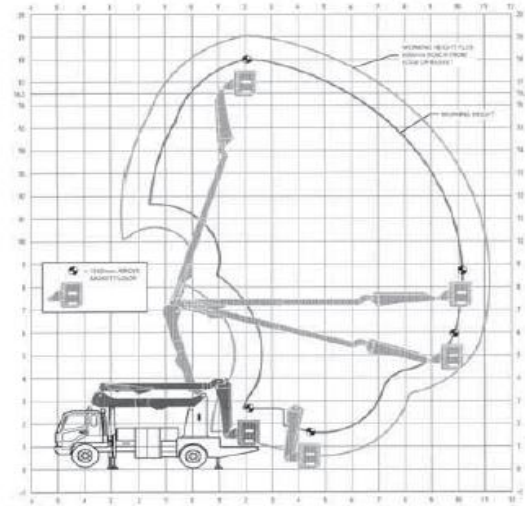
4 x 2

| | |
|--|----------|
| Max working height | 18.00 m |
| Max working radius | 11.10 m |
| Max working radius (max height) | 2.50 m |
| Safe working load | 250 kg |
| Max working radius of fly | 3.00 m |
| Stabiliser spread (outside to outside) | 4.00 m |
| Stabiliser spread (centre to centre) | 4.20 m |
| Max working depth below ground | 0.25 m |
| Travelling height | 4.00 m |
| Travelling width | 2.30 m |
| Travelling length | 7.90 m |
| Overall weight (approx.) | 10340 kg |

4 x 4

| | |
|--|----------|
| Available in 18m | |
| Electrically tested | |
| Travelling height | 4.12 m |
| Travelling width | 2.43 m |
| Travelling length | 8.43 m |
| Stabiliser spread (outside to outside) | 4.10 m |
| Overall weight (approx.) | 12380 kg |

Range Chart



23m

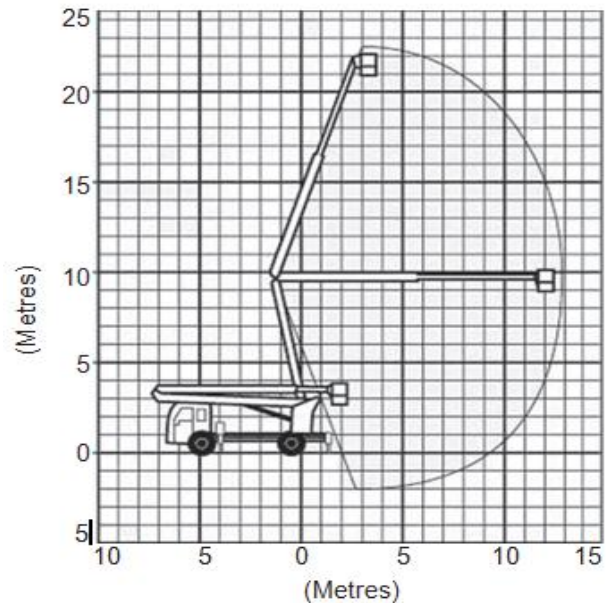
TRAVEL TOWER



For more information on this equipment
or if you require a free onsite inspection,
contact our team

1300 36 2666

Range Chart



Specifications

| | |
|---------------------------------|----------|
| Max working height | 23.00m |
| Max working radius | 13.00 m |
| Max working radius (max height) | 4.50 m |
| Safe working load | 250 kg |
| Stabiliser spread | 4.30 m |
| Travelling height | 3.70 m |
| Travelling width | 2.50 m |
| Travelling length | 9.50 m |
| Overall weight (approx.) | 13000 kg |

Also available in Bogie Drive

www.boomlogistics.com.au

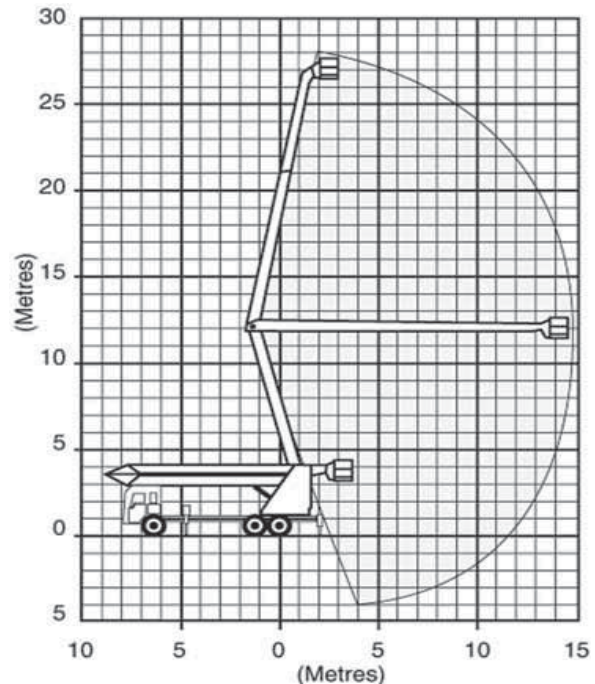
28m

TRAVEL TOWER

For more information on this equipment
or if you require a free onsite inspection,
contact our team

1300 36 2666

Range Chart



Specifications

| | |
|---------------------------------|----------|
| Max working height | 28.00m |
| Max working radius | 15.00 m |
| Max working radius (max height) | 5.00 m |
| Safe working load | 250 kg |
| Stabiliser spread | 4.80 m |
| Max working depth below ground | 3.00 m |
| Travelling height | 4.00 m |
| Travelling width | 2.50 m |
| Travelling length | 10.50 m |
| Overall weight (approx.) | 18000 kg |

240 volt outlet in basket

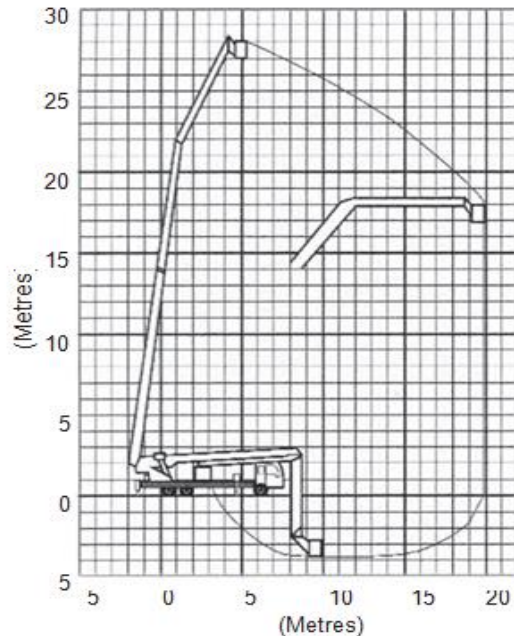
Insulated units available

28m GLOVE & BARRIER TRAVEL TOWER

For more information on this equipment
or if you require a free onsite inspection,
contact our team

1300 36 2666

Range Chart



Specifications

| | |
|---------------------------------|----------|
| Max working height | 28.50m |
| Max working radius | 15.00 m |
| Max working radius (max height) | 5.00 m |
| Safe working load | 350 kg |
| Stabiliser spread | 5.00 m |
| Max working depth below ground | 3.00 m |
| Travelling height | 4.00 m |
| Travelling width | 2.40 m |
| Travelling length | 11.00 m |
| Overall weight (approx.) | 15000 kg |

Insulated units available

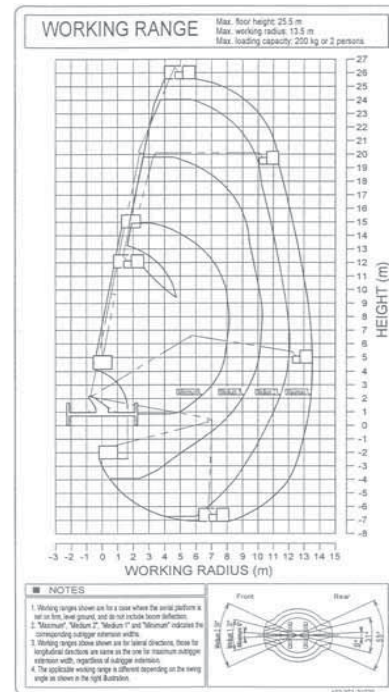
28m TADANO TRAVEL TOWER

For more information on this equipment
or if you require a free onsite inspection,
contact our team

1300 36 2666



Range Chart



Specifications

| | |
|---------------------------------|---------|
| Max working height | 28.00m |
| Max working radius | 13.00 m |
| Max working radius (max height) | 5.00 m |
| Safe working load | 250 kg |
| Stabiliser spread | 4.70 m |
| Max working depth below ground | 7.00 m |
| Travelling height | 3.80 m |
| Travelling width | 2.40 m |
| Travelling length | 8.10 m |
| Overall weight (approx.) | 9500 kg |
| 240 volt outlet in basket | |

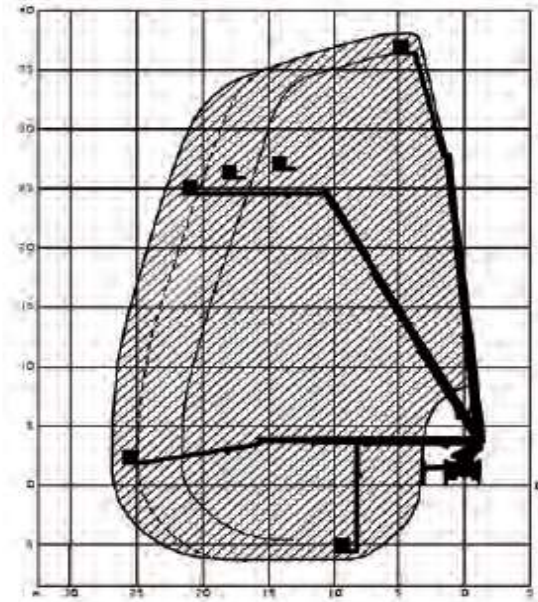
www.boomlogistics.com.au

38m BRONTO TRAVEL TOWER

Range Chart

For more information on this equipment
or if you require a free onsite inspection
contact our team

1300 36 2666



Specifications

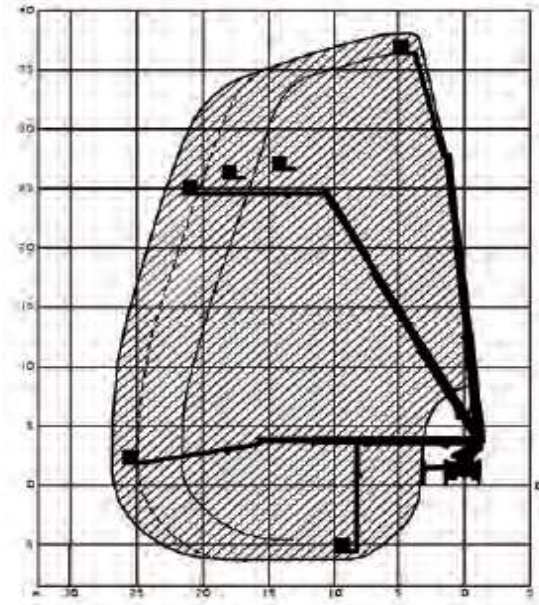
| | |
|--|-----------------|
| Max working height | 38.30 m |
| Max operating reach | 26.60 m |
| Max working radius | 700kg - 20.60 m |
| | 360kg - 24.00 m |
| | 120kg - 26.00 m |
| Safe working load | 700 kg |
| Basket rotation | 90 ° |
| Slewing | 360 ° |
| Stabiliser spread (outside to outside) | 6.20 m |
| Stabiliser spread (centre to centre) | 5.70 m |
| Max working depth below ground | 7.00 m |
| Travelling height | 3.80 m |
| Travelling width | 2.50 m |
| Travelling length | 10.00 m |
| Overall weight (approx.) | 23,500 kg |
| Windspeed rating | 12.5 m/s |
| 240 volt outlet in basket | |
| Hydraulic tool outlett (200 bar) | |

38m BRONTO TRAVEL TOWER

Range Chart

For more information on this equipment
or if you require a free onsite inspection
contact our team

1300 36 2666



Specifications

| | |
|--|-----------------|
| Max working height | 38.30 m |
| Max operating reach | 26.60 m |
| Max working radius | 700kg - 20.60 m |
| | 360kg - 24.00 m |
| | 120kg - 26.00 m |
| Safe working load | 700 kg |
| Basket rotation | 90 ° |
| Slewing | 360 ° |
| Stabiliser spread (outside to outside) | 6.20 m |
| Stabiliser spread (centre to centre) | 5.70 m |
| Max working depth below ground | 7.00 m |
| Travelling height | 3.80 m |
| Travelling width | 2.50 m |
| Travelling length | 10.00 m |
| Overall weight (approx.) | 23,500 kg |
| Windspeed rating | 12.5 m/s |
| 240 volt outlet in basket | |
| Hydraulic tool outlett (200 bar) | |

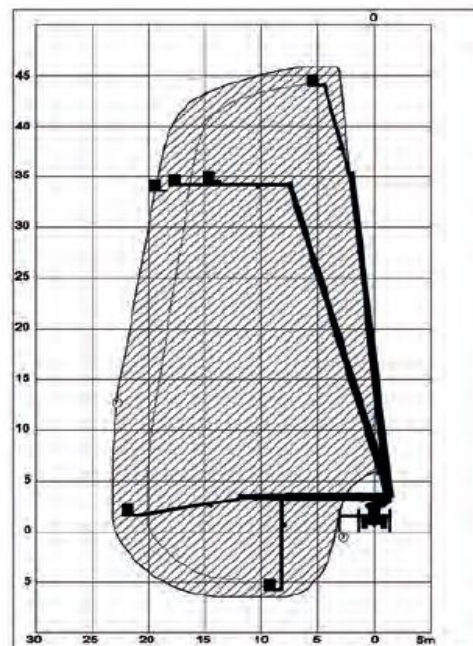
46m BRONTO TRAVEL TOWER



For more information on this equipment
or if you require a free onsite inspection,
contact our team

1300 36 2666

Range Chart



Specifications

| | |
|--|-----------------|
| Max working height | 46.00 m |
| Max operating reach | 24.30 m |
| Max working radius | 700kg - 19.90 m |
| | 360kg - 22.80 m |
| | 120kg - 23.70 m |
| Safe working load | 700 kg |
| Basket rotation | 90 ° |
| Slewing | 360 ° |
| Stabiliser spread (outside to outside) | 6.20 m |
| Stabiliser spread (centre to centre) | 5.90 m |
| Max working depth below ground | 7.00 m |
| Travelling height | 4.00 m |
| Travelling width | 2.50 m |
| Travelling length | 10.00 m |
| Overall weight (approx.) | 24,300 kg |
| Windspeed rating | 12.5 m/s |
| 240 volt outlet in basket | |
| Hydraulic tool outlett (200 bar) | |

www.boomlogistics.com.au

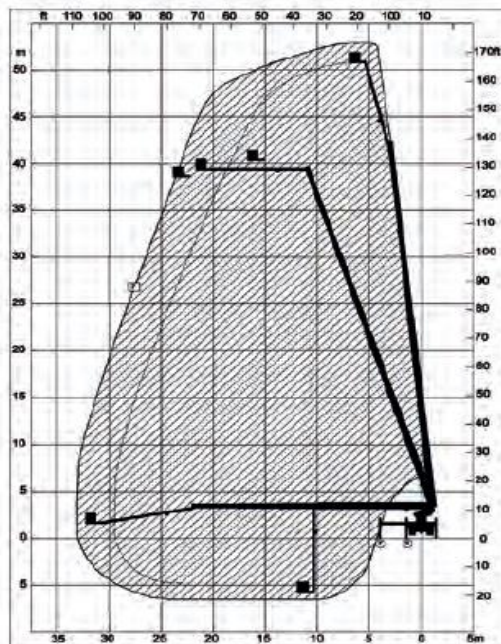
53m BRONTO TRAVEL TOWER



For more information on this equipment
or if you require a free onsite inspection,
contact our team

1300 36 2666

Range Chart



Specifications

| | |
|--|-----------------|
| Max working height | 53.00 m |
| | 700kg - 28.30 m |
| Max working radius | 360kg - 32.20 m |
| | 120kg - 34.00 m |
| Safe working load | 700 kg |
| Basket rotation | 90 ° |
| Slewing | 360 ° |
| Stabiliser spread (outside to outside) | 6.80 m |
| Stabiliser spread (centre to centre) | 6.00 m |
| Max working depth below ground | 7.00 m |
| Travelling height | 4.00 m |
| Travelling width | 2.50 m |
| Travelling length | 11.90 m |
| Overall weight (approx.) | 32,000 kg |
| Windspeed rating | 12.5 m/s |
| 240 volt outlet in basket | |
| Hydraulic tool outlett (200 bar) | |

www.boomlogistics.com.au

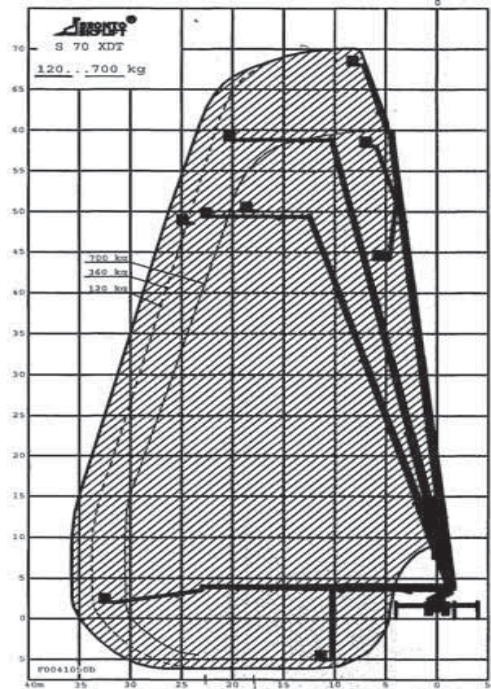
70m BRONTO TRAVEL TOWER



For more information on this equipment
or if you require a free onsite inspection,
contact our team

1300 36 2666

Range Chart



Specifications

| | |
|--|----------|
| Max working height | 70.00 m |
| Max working radius | 35.00 m |
| Max working radius (max height) | 12.00 m |
| Safe working load | 700 kg |
| Basket rotation | 270 ° |
| Max working radius of fly | 11.00 m |
| Stabiliser spread (outside to outside) | 8.00 m |
| Stabiliser spread (centre to centre) | 7.30 m |
| Max working depth below ground | 5.00 m |
| Travelling height | 4.20 m |
| Travelling width | 2.50 m |
| Travelling length | 12.30 m |
| Overall weight (approx.) | 37000 kg |

240 volt outlet in basket

www.boomlogistics.com.au



BOON
LOGISTICS

1 300 36 2666

www.boomlogistics.com.au