

38M Bronto Travel Tower

HT38M

FEATURES

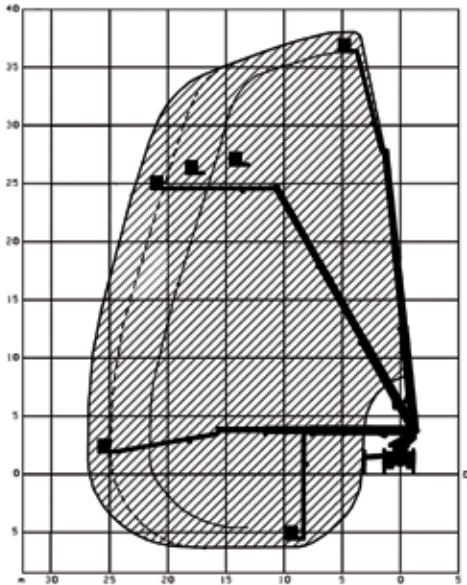
- 6x6 wheel drive plus off-road capability
- Reversing camera
- Variable outrigger positioning system
- Hydraulic tool outlet in basket
- 240V power to basket
- Basket-mounted floodlighting to illuminate work area
- In-built anemometer & alert

APPLICATIONS

- Telecommunications infrastructure
- HV transmission tower dressing & line stringing
- Bridge & civil construction maintenance
- Mining & industrial plant maintenance
- Sign installations
- Vegetation management
- Local government & lighting maintenance



RANGE CHART



38M BRONTO TRAVEL TOWER



Basket mounted flood lighting



Hydraulic tool outlet (200 bar)



Reversing camera

SPECIFICATIONS

Type	Vehicle mounted elevating work platform
Operating Height	Basket floor height: 36.3 metres Working height: 38.3 metres
Max Operating Reach	Rated basket reach: 26.0 metres Working reach: 26.6 metres
Max Working Depth	Below ground level: 7.0 metres
Max Working Radius	Maximum working load 700 kilograms: 20.6 metres Maximum working load 360 kilograms: 24.0 metres Maximum working load 120 kilograms: 26.0 metres
Basket Dimensions	Width: 2.4 metres Length: 1.1 metres
Max Safe Work Load	700 kilograms
Unit Dimensions (Stowed)	Travelling height: 3.8 metres Travelling width: 2.5 metres Travelling length: 10.0 metres Maximum weight: 23,500 kilograms
Basket Rotation	90 degrees
Slewing	360 degree continuous
Stabilisers	4 x hydraulic operated, telescoping stabiliser legs with self-levelling feet Variable individual outrigger positioning system*
Stabiliser Spread	Full outrigger extension: 6.2 x 5.7 metres Minimum variable extension: 2.8 x 5.7 metres
Prime Mover	Scania
Standard	Built to AS1418.10 2011
Windspeed Rating	Operation permitted up to 12.5 metres per second

All details in this spec sheet are accurate as per the manufacturer's data at the time of printing. This literature is not a complete guide to product usage. Further information is available from your Boom Sherrin representative, tel: 136 132. Product specifications may change without notice.

* Based on the required outrigger position and basket load, the 3+ Computer System automatically selects the maximum outreach in all directions. The computer then displays the current basket working position in graphical and numeric format.

For more information on how **BOOM Sherrin** can assist with your access requirements please contact our National Business Development Manager on 07 3868 6888 or speak to your nearest branch.

136 132