

BOOM

LOGISTICS

BOOM 750t Crawler Crane

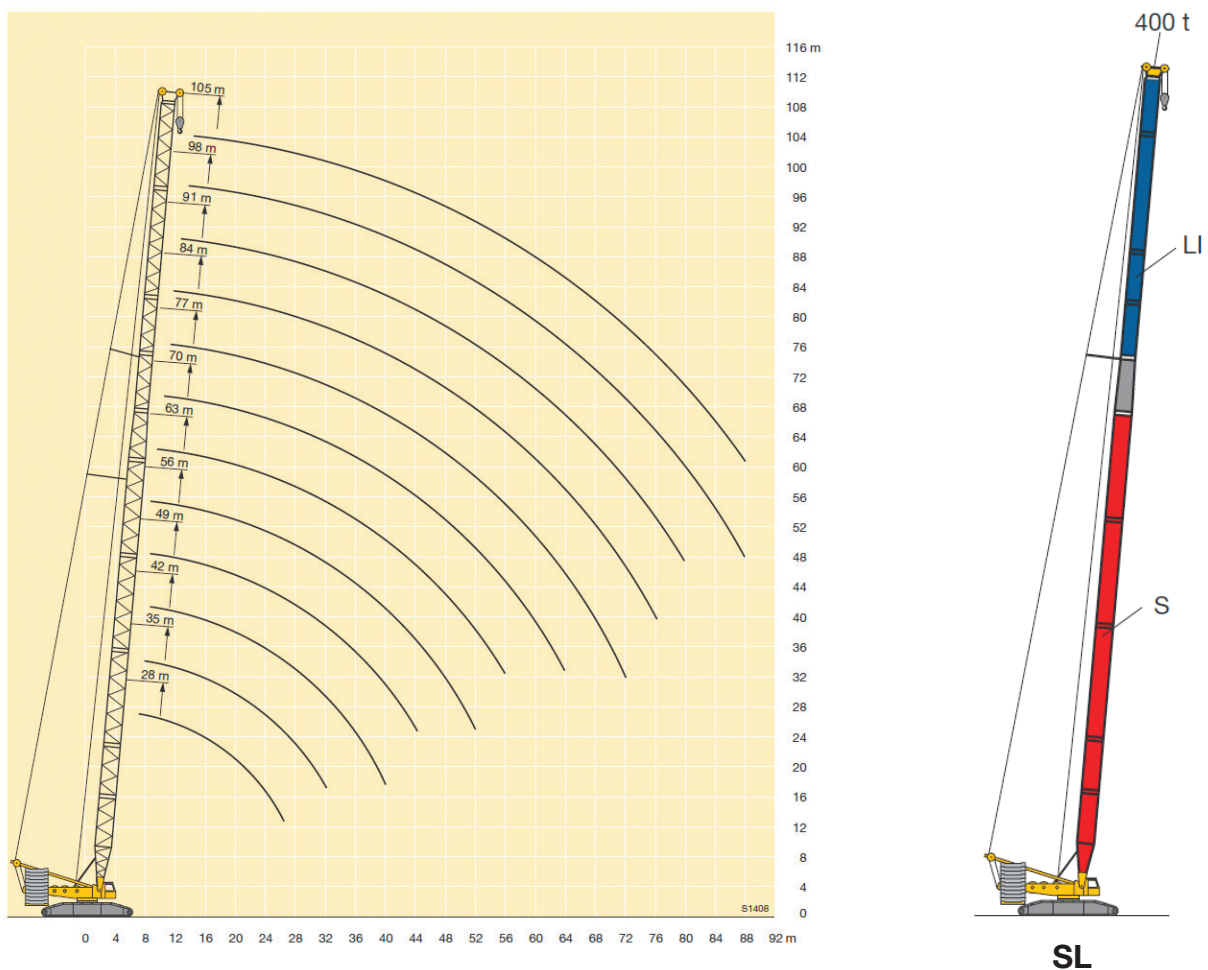


BOOM's 750t Crawler Crane is meeting the challenges of large developments with optimised performance from the SL boom configuration.

BOOM provides full engineering, planning, cost control, supervision, equipment and execution to give you peace of mind. The BOOM 750t Crawler Crane has a two metre wide track providing 38% less ground bearing pressure and is a practical design which ensures simple, safe crane assembly and short set-up times.

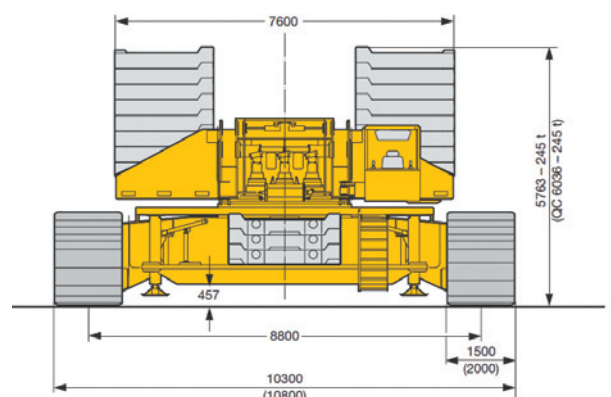
The crawler is equipped with the option of a pedestal system where outriggers are attached to either the crawler centre section or the track frames and provide a broad stable base. The pedestal set-up requires less ground preparation and the crane can be levelled with the hydraulic outriggers. Lifting capacity can be increased by up to 370% in the pedestal configuration.

For all its capacity and capabilities, the BOOM 750t can be broken down for transport so that the heaviest component (56t) is the two metre wide track.



Complete technical data BOOM 750t Crawler Crane

Max. rating load	750t
Max. lifting height	118m
Carrier engine/crane engine power	Liebherr 8-cylinder turbo-diesel 400kW
Track width from centres	8.8m
Track width	2m



Wind Farm Configuration

118m with a special wind farm
boom attachment and erection jib.





Lifting Standards

Take the risk out of lifting and work with Australia's best

There is no substitute for expertise and technical experience
when it comes to lifting solutions and exceeding the
Occupational Health & Safety standards throughout Australia

BOOM provides full engineering, planning, cost control, supervision,
equipment and execution to give you peace of mind

1300 36 2666

www.boomlogistics.com.au