



YOUR EWVP SOLUTIONS GUIDE

BOOM
LOGISTICS

At BOOM Logistics we're much more than just an elevated work platform supplier.

For more than 40 years now we've been offering tailored EWP solutions from a comprehensive equipment fleet Australia-wide; backed by on-call sales and service assistance; reliable solutions and one of the safest working practices in the industry.

GRADEABILITY CONVERSION

Gradeability	5%	10%	15%	20%	25%	30%	35%	40%	45%	50%	55%	60%
Degrees	2.86	5.71	8.53	11.31	14.04	16.70	19.29	21.80	24.23	26.57	28.81	30.96

PLEASE NOTE

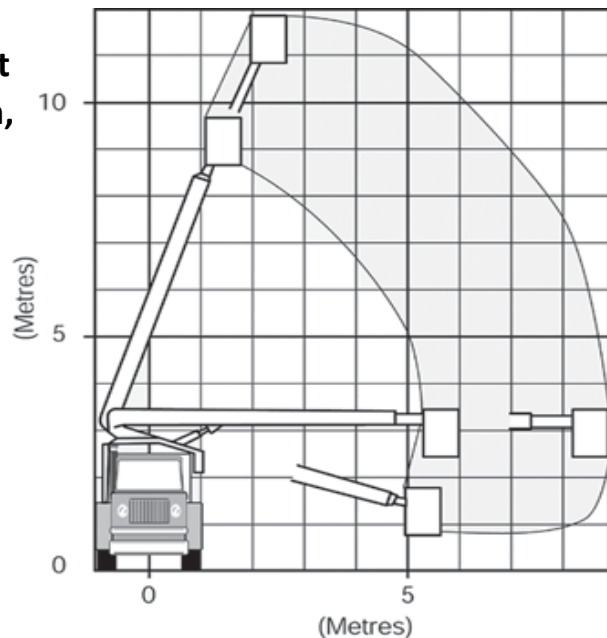
Every effort has been made to accurately specify our equipment in the following pages. Due to availability of equipment actual makes & models supplied may vary from what is indicated. BOOM Logistics specifies "Working Height" as a standard additional height of 6ft (1.8m) above the manufacturer's specified platform height.

12m KNUCKLE BOOM TRAVEL TOWER

Range Chart

For more information on this equipment
or if you require a free onsite inspection,
contact our team

1300 36 2666



Specifications

Max working height	12.00 m
Max working radius	6.50 m
Max working radius (max height)	2.60 m
Safe working load	250 kg
Stabiliser spread	3.80 m
Travelling height	3.00 m
Travelling width	2.42 m
Travelling length	7.80 m
Overall weight (approx.)	7500 kg

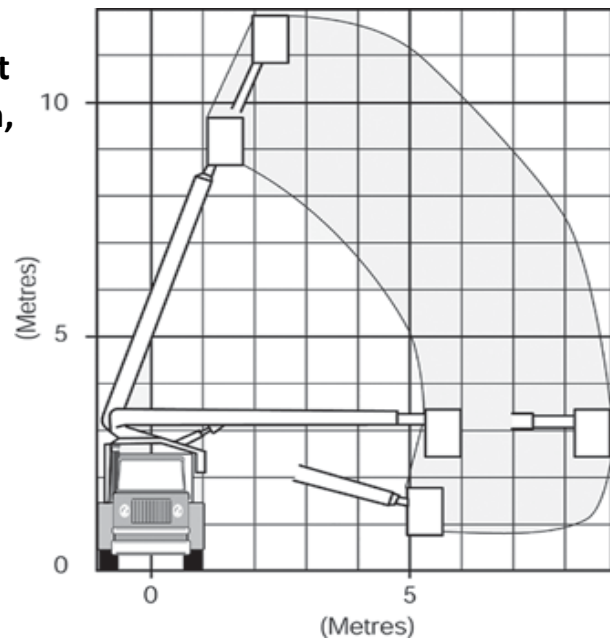
Insulated units available

12m STELCO TELESCOPIC BOOM

For more information on this equipment
or if you require a free onsite inspection,
contact our team

1300 36 2666

Range Chart



Specifications

Max working height	12.00 m
Max working radius	9.00 m
Max working radius (max height)	3.80 m
Safe working load	136 kg
Travelling height	3.30 m
Travelling width	2.20 m
Travelling length	6.40 m
Overall weight (approx.)	7500 kg

Fitted with hydraulic tool lines

NO STABILISERS

Also available in road rail, STD & wide gauge only

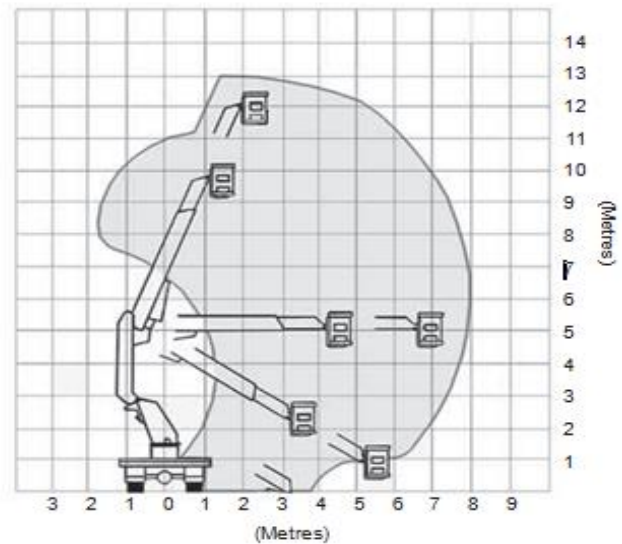
Insulated units available

13m KUNCKLE TELESCOPIC TRAVEL TOWER

Range Chart

For more information on this equipment
or if you require a free onsite inspection
contact our team

1300 36 2666



Specifications

Max working height	13.00 m
Max working radius	7.80 m
Max working radius (max height)	3.00 m
Safe working load	250 kg
Travelling height	3.40 m
Travelling width	2.20 m
Travelling length	6.40 m
Overall weight (approx.)	9000 kg

Fitted with hydraulic tool lines

Spring locks fitted

Also available in road rail, STD & wide gauge only

Insulated units available

18m GLOVE & BARRIER TRAVEL TOWER



For more information on this equipment
or if you require a free onsite inspection,
contact our team

1300 36 2666

Specifications

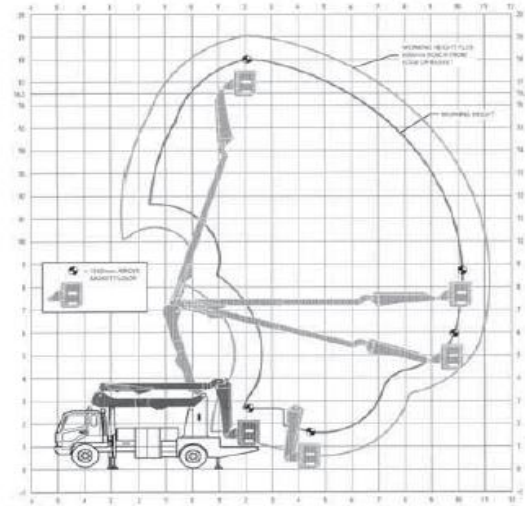
4 x 2

Max working height	18.00 m
Max working radius	11.10 m
Max working radius (max height)	2.50 m
Safe working load	250 kg
Max working radius of fly	3.00 m
Stabiliser spread (outside to outside)	4.00 m
Stabiliser spread (centre to centre)	4.20 m
Max working depth below ground	0.25 m
Travelling height	4.00 m
Travelling width	2.30 m
Travelling length	7.90 m
Overall weight (approx.)	10340 kg

4 x 4

Available in 18m	
Electrically tested	
Travelling height	4.12 m
Travelling width	2.43 m
Travelling length	8.43 m
Stabiliser spread (outside to outside)	4.10 m
Overall weight (approx.)	12380 kg

Range Chart



23m

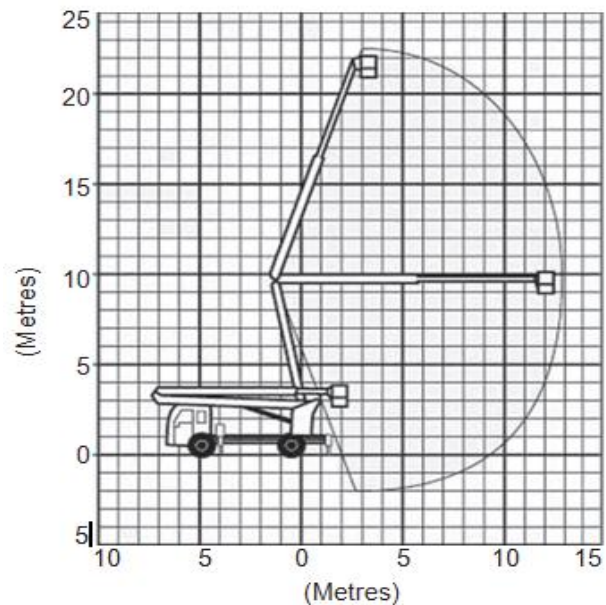
TRAVEL TOWER



For more information on this equipment
or if you require a free onsite inspection,
contact our team

1300 36 2666

Range Chart



Specifications

Max working height	23.00m
Max working radius	13.00 m
Max working radius (max height)	4.50 m
Safe working load	250 kg
Stabiliser spread	4.30 m
Travelling height	3.70 m
Travelling width	2.50 m
Travelling length	9.50 m
Overall weight (approx.)	13000 kg

Also available in Bogie Drive

www.boomlogistics.com.au

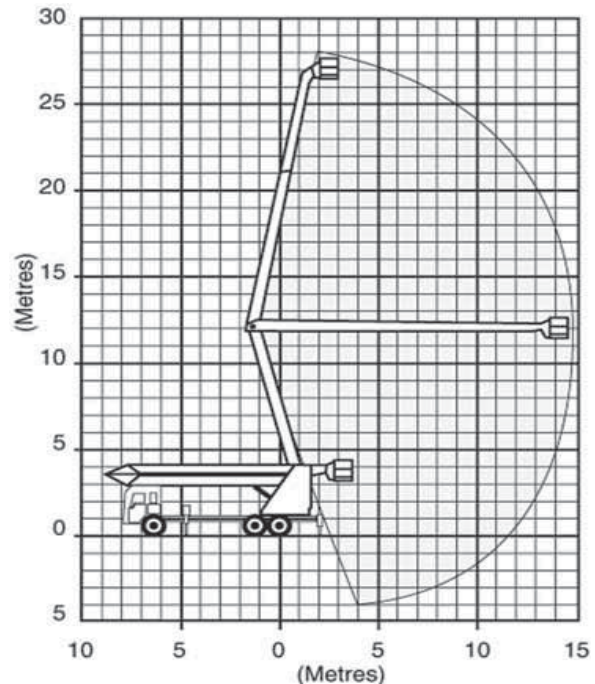
28m

TRAVEL TOWER

For more information on this equipment
or if you require a free onsite inspection,
contact our team

1300 36 2666

Range Chart



Specifications

Max working height	28.00m
Max working radius	15.00 m
Max working radius (max height)	5.00 m
Safe working load	250 kg
Stabiliser spread	4.80 m
Max working depth below ground	3.00 m
Travelling height	4.00 m
Travelling width	2.50 m
Travelling length	10.50 m
Overall weight (approx.)	18000 kg

240 volt outlet in basket

Insulated units available

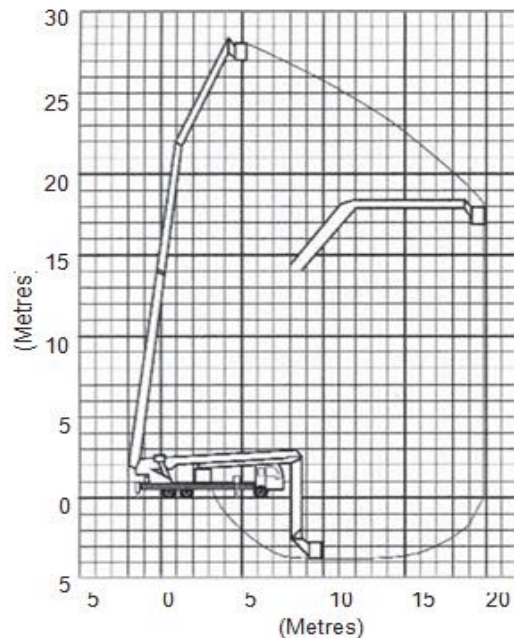
28m GLOVE & BARRIER TRAVEL TOWER

For more information on this equipment
or if you require a free onsite inspection,
contact our team

1300 36 2666



Range Chart



Specifications

Max working height	28.50m
Max working radius	15.00 m
Max working radius (max height)	5.00 m
Safe working load	350 kg
Stabiliser spread	5.00 m
Max working depth below ground	3.00 m
Travelling height	4.00 m
Travelling width	2.40 m
Travelling length	11.00 m
Overall weight (approx.)	15000 kg

Insulated units available

www.boomlogistics.com.au

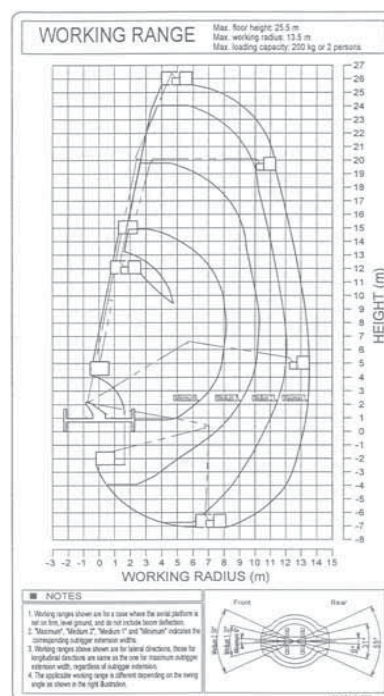
28m TADANO TRAVEL TOWER

BOOM
LOGISTICS

For more information on this equipment
or if you require a free onsite inspection,
contact our team

1300 36 2666

Range Chart



Specifications

Max working height	28.00m
Max working radius	13.00 m
Max working radius (max height)	5.00 m
Safe working load	250 kg
Stabiliser spread	4.70 m
Max working depth below ground	7.00 m
Travelling height	3.80 m
Travelling width	2.40 m
Travelling length	8.10 m
Overall weight (approx.)	9500 kg
240 volt outlet in basket	

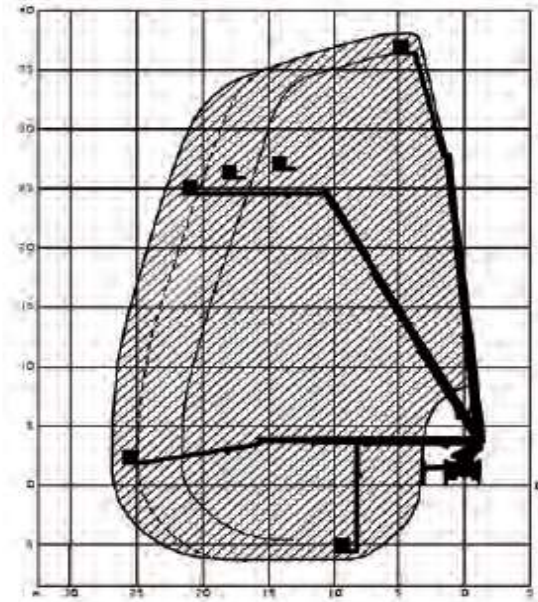
www.boomlogistics.com.au

38m BRONTO TRAVEL TOWER

Range Chart

For more information on this equipment
or if you require a free onsite inspection
contact our team

1300 36 2666



Specifications

Max working height	38.30 m
Max operating reach	26.60 m
Max working radius	700kg - 20.60 m
	360kg - 24.00 m
	120kg - 26.00 m
Safe working load	700 kg
Basket rotation	90 °
Slewing	360 °
Stabiliser spread (outside to outside)	6.20 m
Stabiliser spread (centre to centre)	5.70 m
Max working depth below ground	7.00 m
Travelling height	3.80 m
Travelling width	2.50 m
Travelling length	10.00 m
Overall weight (approx.)	23,500 kg
Windspeed rating	12.5 m/s
240 volt outlet in basket	
Hydraulic tool outlet (200 bar)	

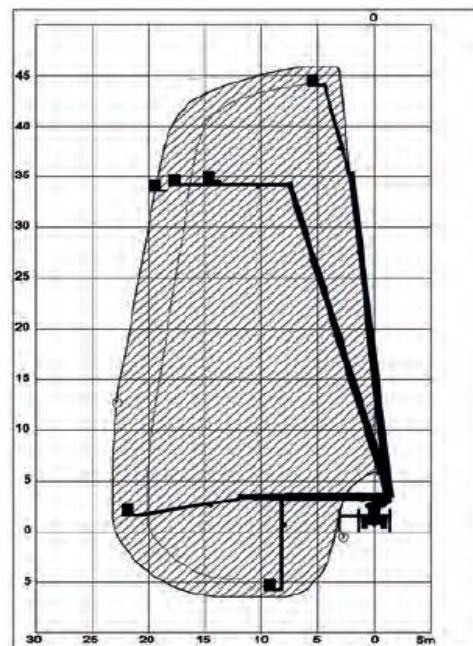
46m BRONTO TRAVEL TOWER



For more information on this equipment
or if you require a free onsite inspection,
contact our team

1300 36 2666

Range Chart



Specifications

Max working height	46.00 m
Max operating reach	24.30 m
Max working radius	700kg - 19.90 m 360kg - 22.80 m 120kg - 23.70 m
Safe working load	700 kg
Basket rotation	90 °
Slewing	360 °
Stabiliser spread (outside to outside)	6.20 m
Stabiliser spread (centre to centre)	5.90 m
Max working depth below ground	7.00 m
Travelling height	4.00 m
Travelling width	2.50 m
Travelling length	10.00 m
Overall weight (approx.)	24,300 kg
Windspeed rating	12.5 m/s
240 volt outlet in basket	
Hydraulic tool outlett (200 bar)	

www.boomlogistics.com.au

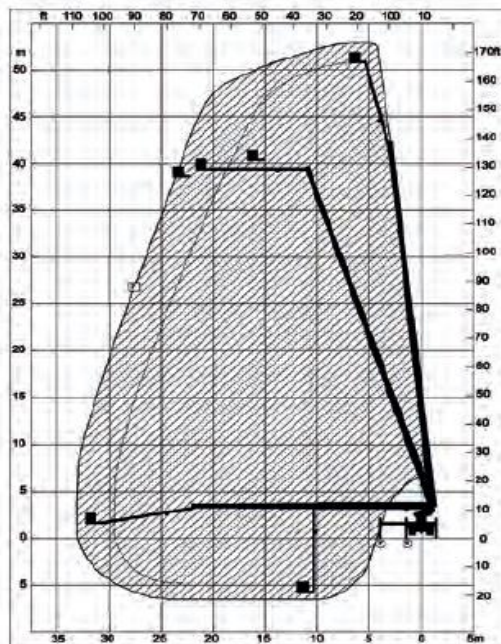
53m BRONTO TRAVEL TOWER



For more information on this equipment
or if you require a free onsite inspection,
contact our team

1300 36 2666

Range Chart



Specifications

Max working height	53.00 m
	700kg - 28.30 m
Max working radius	360kg - 32.20 m
	120kg - 34.00 m
Safe working load	700 kg
Basket rotation	90 °
Slewing	360 °
Stabiliser spread (outside to outside)	6.80 m
Stabiliser spread (centre to centre)	6.00 m
Max working depth below ground	7.00 m
Travelling height	4.00 m
Travelling width	2.50 m
Travelling length	11.90 m
Overall weight (approx.)	32,000 kg
Windspeed rating	12.5 m/s
240 volt outlet in basket	
Hydraulic tool outlett (200 bar)	

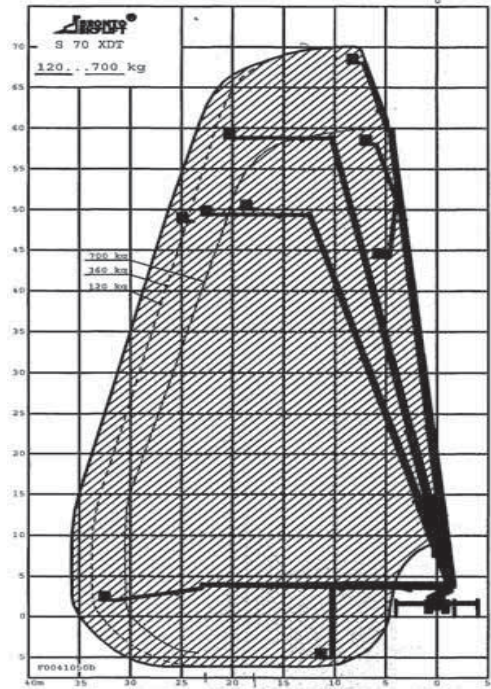
www.boomlogistics.com.au

70m BRONTO TRAVEL TOWER

For more information on this equipment
or if you require a free onsite inspection,
contact our team

1300 36 2666

Range Chart



Specifications

Max working height	70.00 m
Max working radius	35.00 m
Max working radius (max height)	12.00 m
Safe working load	700 kg
Basket rotation	270 °
Max working radius of fly	11.00 m
Stabiliser spread (outside to outside)	8.00 m
Stabiliser spread (centre to centre)	7.30 m
Max working depth below ground	5.00 m
Travelling height	4.20 m
Travelling width	2.50 m
Travelling length	12.30 m
Overall weight (approx.)	37000 kg

240 volt outlet in basket

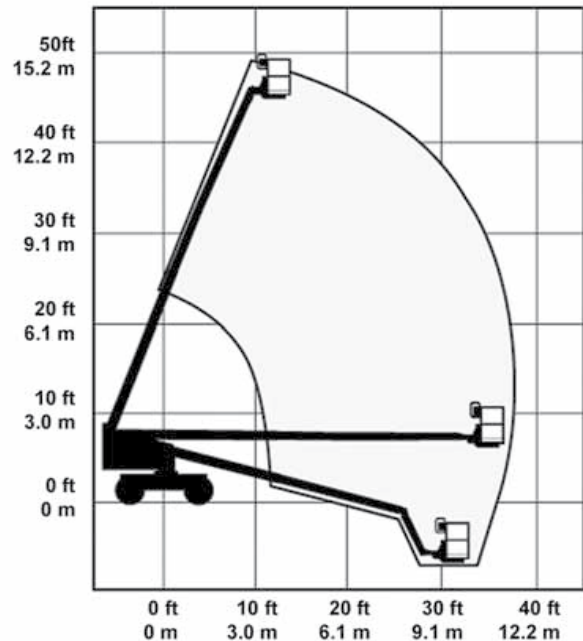
45' BOOM LIFT WITH FLY BOOM

For more information on this equipment or if you require a free onsite inspection, contact our team

1300 36 2666

BOOM
LOGISTICS

Range Chart



Specifications

Working height	15.5 m
Platform height	13.7 m
Platform size	0.91 x 2.40 m
Safe working load	227 kg
Horizontal reach	11.20 m
Wheelbase	2.20 m
Turntable rotation	360 ° continuous
Turntable tailswing	0.864 m
Drive speeds stowed	4.50 km/h
Drive speeds raised	1.10 km/h
Gradeability	40 %
Turning radius (inside)	2.00 m
Turning radius (outside)	4.80 m
Stowed height	2.50 m
Stowed length	8.50 m
Stowed width	2.30 m
Overall weight (approx.)	6709 kg
Basket rotation	160 °

www.boomlogistics.com.au

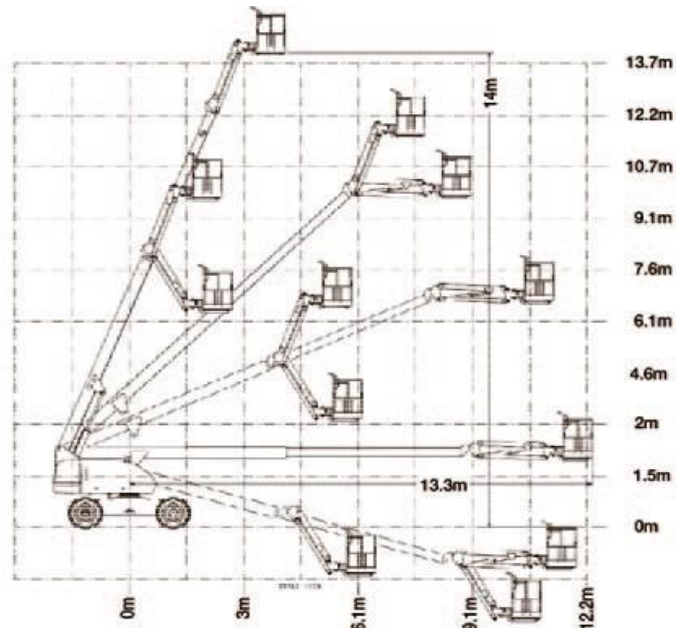
45' JLG BOOM LIFT WITH FLY BOOM

For more information on this equipment or if you require a free onsite inspection, contact our team

1300 36 2666

BOOM
LOGISTICS

Range Chart



Specifications

Working height	16.02 m
Platform height	14.02 m
Platform size	0.91 x 2.44 m
Safe working load	230 kg
Horizontal reach	12.34 m
Wheelbase	2.34 m
Turntable rotation	360 ° continuous
Turntable tailswing	0.86 m
Drive speeds stowed	7.72 km/h
Drive speeds raised	0.97 km/h
Gradeability	45 %
Turning radius (inside)	2.01 m
Turning radius (outside)	5.30 m
Stowed height	2.39 m
Stowed length	8.84 m
Stowed width	2.30 m
Overall weight (approx.)	7930 kg
Basket rotation	160 °
Jib rotation	130 °
Wind speed rating	12.50 m/sec

www.boomlogistics.com.au

45' KNUCKLE BOOM WITH JIB DIESEL

For more information on this
equipment or if you require a free
onsite inspection, contact our team

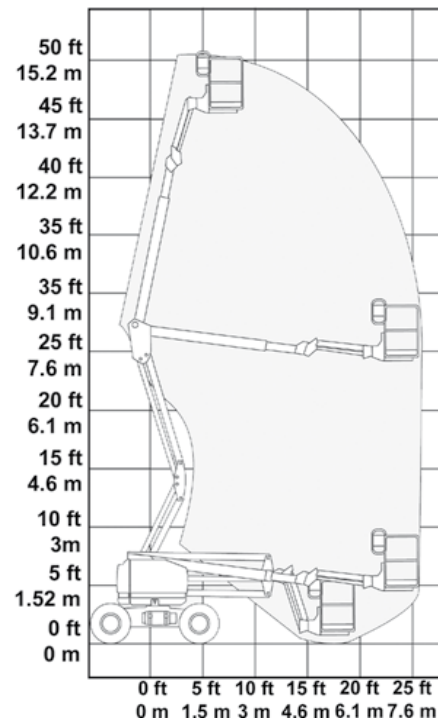
1300 36 2666

Specifications

Working height	15.7 m
Platform height	13.90 m
Platform size	0.77 x 1.83 m
Safe working load	227 kg
Wheelbase	2.03 m
Turntable rotation	359 °
Turntable tailswing	zero
Drive speeds stowed	7.72 km/h
Drive speeds raised	0.97 km/h
Gradeability (4x4)	45 %
Turning radius (inside)	1.37 m
Stowed height	2.08 m
Stowed length	6.67 m
Stowed width	2.30 m
Overall weight (approx.)	6668 kg
Platform rotation	160 °

BOOM
LOGISTICS

Range Chart



www.boomlogistics.com.au

60'

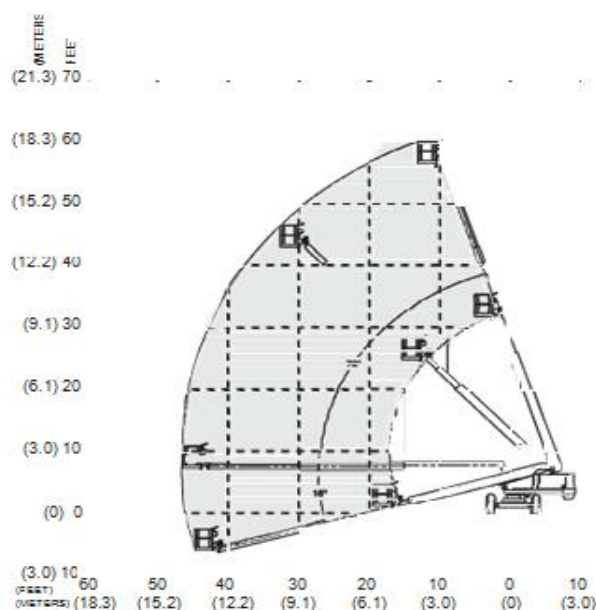
BOOM LIFT

For more information on this equipment or if you require a free onsite inspection, contact our team

1300 36 2666



Range Chart



Specifications

Working height	20.10 m
Max Platform height	18.30 m
Horizontal reach	15.2 m
Platform size	0.76 x 1.52 m
Safe working load	227 kg
Drive speeds stowed	4.80 km/h
Drive speeds raised	1.60 km/h
Turning radius (inside)	4.70 m
Stowed length	9.40 m
Overall width	2.45 m
Wheelbase	3.10 m
Overall weight (approx.)	10000 kg
Basket rotation	180 °
240 volt power to basket	

www.boomlogistics.com.au

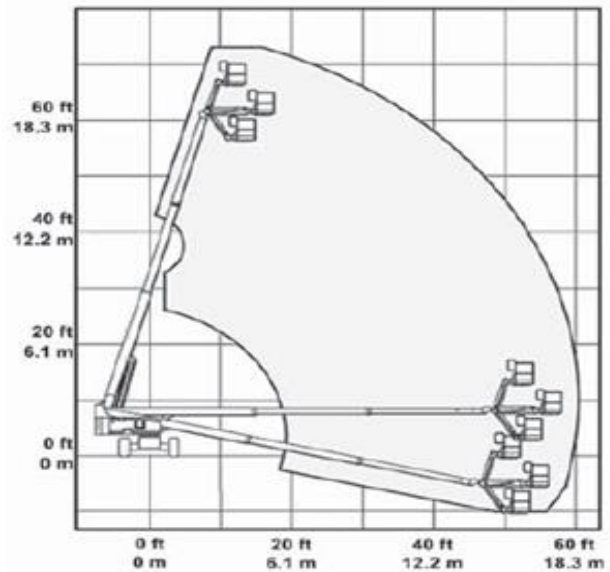
66' BOOM LIFT WITH FLY BOOM

For more information on this equipment or if you require a free onsite inspection, contact our team

1300 36 2666

BOOM
LOGISTICS

Range Chart



Specifications

Working height	21.90 m
Platform height	20.10 m
Platform size	0.76 x 1.52 m
Basket rotation	180 °
Safe working load	227 kg
Horizontal reach	17.10 m
Wheelbase	3.0 m
Turntable rotation	360 ° continuous
Turntable tailswing	1.0 m
Drive speeds stowed	4.80 km/h
Drive speeds raised	1.60 km/h
Gradeability stowed	25 %
Turning radius (inside)	3.70 m
Turning radius (outside)	6.80 m
Stowed height	2.70 m
Stowed length	10.10 m
Width	2.50 m
Overall weight (approx.)	12477 kg

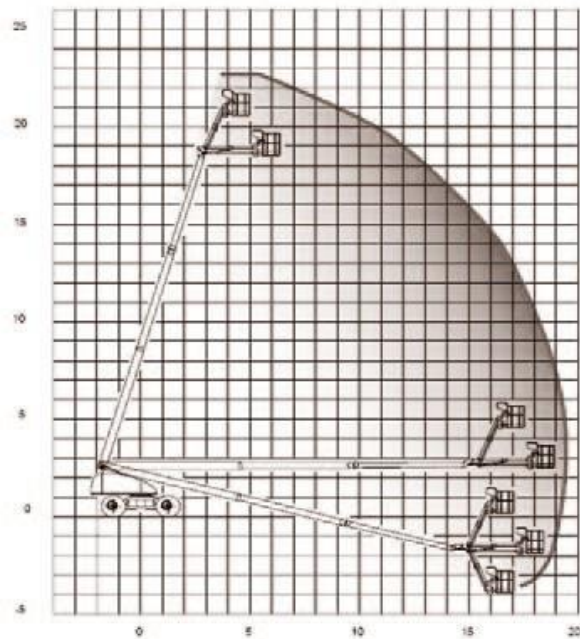
www.boomlogistics.com.au

66' HAULOTTE BOOM WITH FLY BOOM

For more information on this
equipment or if you require a free
onsite inspection, contact our team

1300 36 2666

Range Chart



Specifications

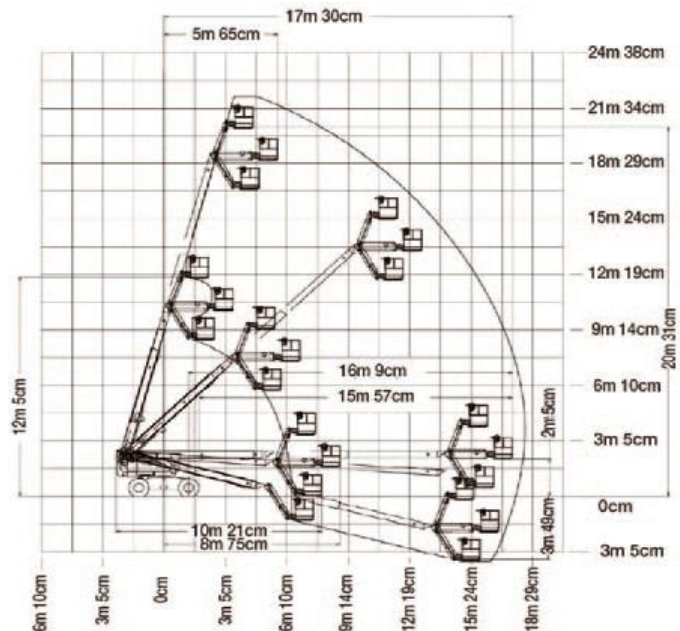
Working height	22.60 m
Platform height	20.60 m
Platform size	0.80 x 1.80 m
Safe working load	230 kg
Horizontal reach	19.50 m
Wheelbase	2.49 m
Turntable rotation	360 ° continuous
Turntable tailswing	1.10 m
Drive speeds stowed	5.00 km/h
Drive speeds raised	1.50 km/h
Gradeability	40 %
Turning radius (inside)	6.15 m
Turning radius (outside)	3.00 m
Stowed height	3.00 m
Stowed length	10.60 m
Overall weight (approx.)	13110 kg
Basket rotation	180 °
Jib rotation	140 °
Wind speed rating	12.50 m/sec

66' JLG BOOM LIFT WITH FLY BOOM

For more information on this equipment or if you require a free onsite inspection, contact our team

1300 36 2666

Range Chart



Specifications

Working height	22.31 m
Platform height	20.31 m
Platform size	0.91 x 2.24 m
Safe working load	230 kg
Horizontal reach	17.30 m
Wheelbase	2.48 m
Turntable rotation	360 ° continuous
Turntable tailswing	1.14 m
Drive speeds stowed	6.80 km/h
Drive speeds raised	0.80 km/h
Gradeability	45 %
Turning radius (inside)	1.65 m
Turning radius (outside)	3.45 m
Stowed height	2.56 m
Stowed length	10.21 m
Width	4.42 m
Overall weight (approx.)	13550 kg
Basket rotation	180 °
Jib rotation	130 °
Wind speed rating	12.50 m/sec

80'

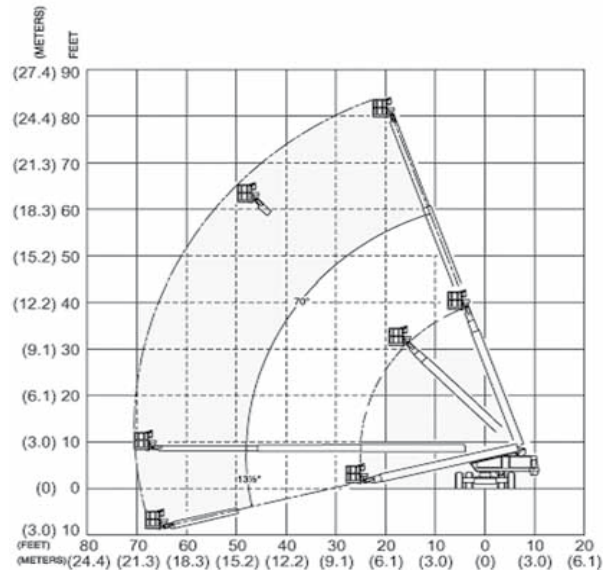
BOOM LIFT

For more information on this equipment or if you require a free onsite inspection, contact our team

1300 36 2666



Range Chart



Specifications

Working height	26.20 m
Max Platform height	24.40 m
Horizontal reach	21.70 m
Platform size	0.76 x 1.52 m
Basket rotation	160 °
Safe working load	227 kg
Turret rotation	360 ° continuous
Drive speeds stowed	4.80 km/h
Drive speeds raised	1.21 km/h
Turning radius (inside)	5.30 m
Stowed height	2.90 m
Stowed width	2.60 m
Stowed length	11.80 m
Wheelbase	3.70 m
Overall weight (approx.)	
Snorkel	13744 kg
Genie	15500 kg
Width (axles retracted)	2.40 m
Width (axles extended)	3.04 m

www.boomlogistics.com.au

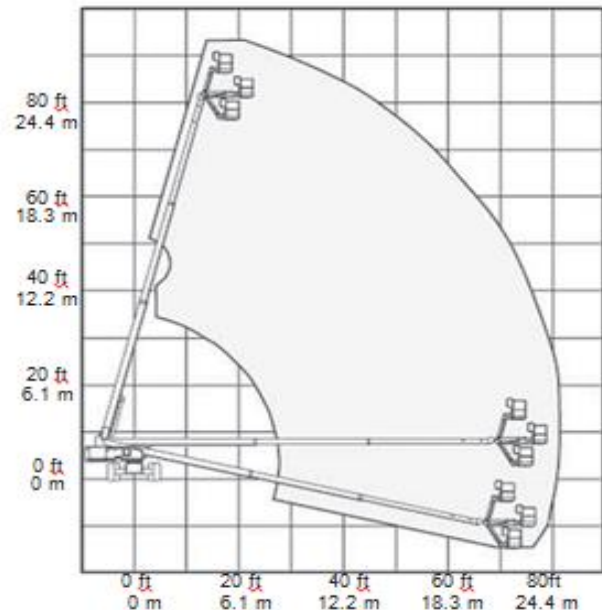
85' BOOM LIFT WITH FLY BOOM

For more information on this
equipment or if you require a free
onsite inspection, contact our team

1300 36 2666

BOOM
LOGISTICS

Range Chart



Specifications

Working height	27.70 m
Platform height	25.90 m
Platform size	0.91 x 2.40 m
Basket rotation	160 °
Safe working load	227 kg
Horizontal reach	23.40 m
Wheelbase	2.74 m
Turntable rotation	360 ° continuous
Turntable tailswing	1.10 m
Drive speeds stowed	4.90 km/h
Drive speeds raised	1.10 km/h
Gradeability	38 %
Turning radius (inside)	3.20 m
Turning radius (outside)	7.00 m
Stowed height	2.80 m
Stowed length	12.40 m
Width (axles retracted)	2.40 m
Width (axles extended)	3.04 m
Overall weight (approx.)	16266 kg

www.boomlogistics.com.au

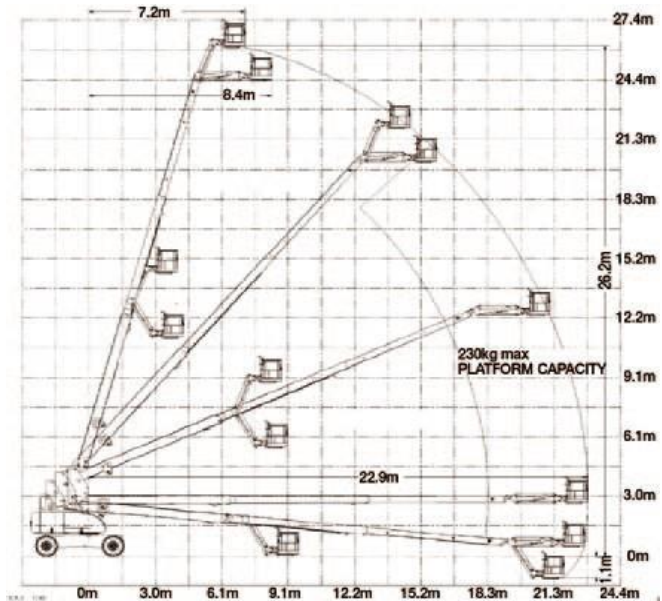
85' JLG BOOM LIFT WITH FLY BOOM

For more information on this equipment or if you require a free onsite inspection, contact our team

1300 36 2666

BOOM
LOGISTICS

Range Chart



Specifications

Working height	28.21 m
Platform height	26.21 m
Platform size	0.91 x 2.44 m
Safe working load	230 kg
Horizontal reach	22.86 m
Wheelbase	3.05 m
Turntable rotation	360 ° continuous
Turntable tailswing	1.42 m
Drive speeds stowed	5.60 km/h
Drive speeds raised	0.80 km/h
Gradeability	45 %
Turning radius (inside)	3.66 m
Turning radius (outside)	6.86 m
Stowed height	3.05 m
Stowed length	12.19 m
Width	2.49 m
Overall weight (approx.)	17200 kg
Basket rotation	180 °
Jib rotation	130 °
Wind speed rating	12.50 m/sec

www.boomlogistics.com.au

120'

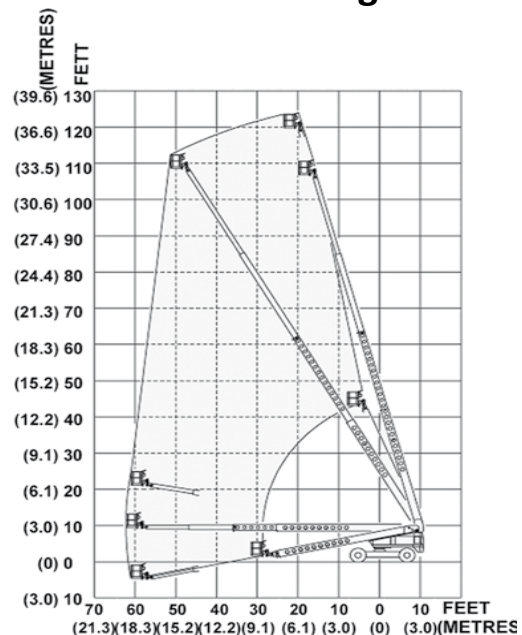
BOOM LIFT

For more information on this equipment or if you require a free onsite inspection, contact our team

1300 36 2666



Range Chart



Specifications

Working height	38.40 m
Max Platform height	36.60 m
Horizontal reach	18.90 m
Platform size	0.76 x 2.34 m
Basket rotation	160 °
Safe working load	227 kg
Turntable rotation	360 ° continuous
Drive speeds high (stowed)	4.80 km/h
Drive speeds mid (stowed)	2.40 km/h
Drive speeds low (mid elevation)	1.20 km/h
Drive speeds creep (extended)	3 mpm
Gradeability	25 %
Turning radius (inside)	6.10 m
Stowed height	3.04 m
Stowed width	2.60 m
Stowed length	12.90 m
Wheelbase	3.70 m
Overall weight (approx.)	17917 kg
Width (axles extended)	3.04 m
Basket rotation	180 °

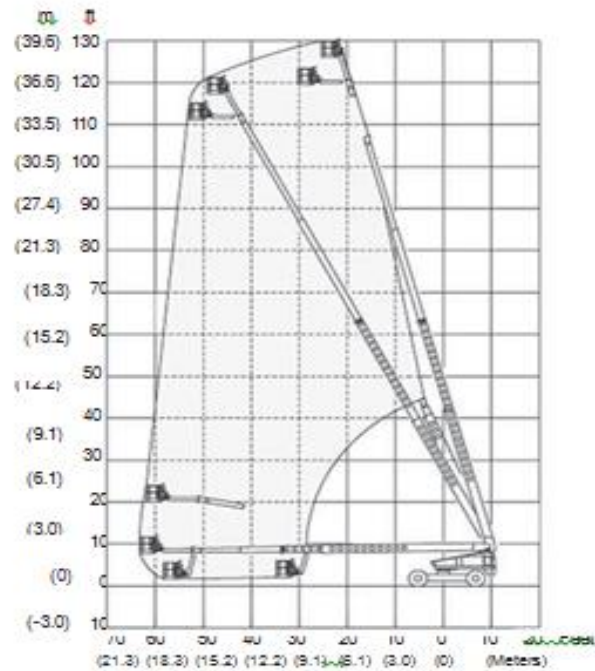
126' BOOM LIFT WITH FLY BOOM

For more information on this equipment or if you require a free onsite inspection, contact our team

1300 36 2666

BOOM
LOGISTICS

Range Chart



Specifications

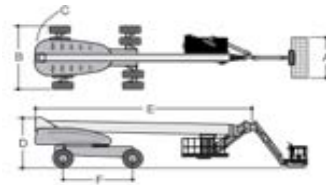
Working height	40.23 m
Platform height	38.40 m
Platform size	0.76 x 2.34 m
Safe working load	227 kg
Horizontal reach	19.20 m
Turntable rotation	360 ° continuous
Drive speeds high (stowed)	4.83 km/h
Drive speeds mid (stowed)	2.42 km/h
Drive speeds low (mid elevation)	1.21 km/h
Drive speeds creep (extended)	0.18 km/h
Gradeability	25 %
Turning radius (inside)	6.10 m
Stowed height	3.10 m
Stowed length	13.00 m
Width (axles retracted)	2.60 m
Width (axles extended)	3.90 m
Wheelbase	3.66 m
Overall weight (approx.)	18978 kg
Basket rotation	180 °

www.boomlogistics.com.au

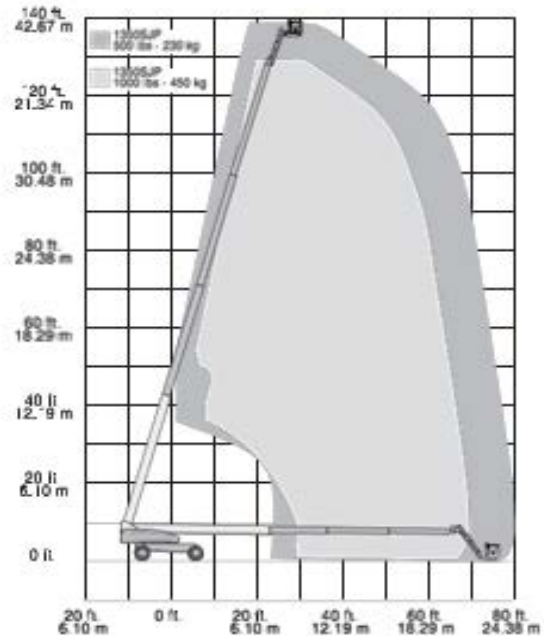
135' JLG BOOM LIFT

For more information on this equipment or if you require a free onsite inspection, contact our team

1300 36 2666



Range Chart



Specifications

Working height	43.00 m
Max Platform height	41.15 m
Horizontal reach	24.38 m
Swing	360 ° continuous
Platform Capacity - restricted	450 kg
Platform rotation	180 °
Width (retracted)	2.49 m
Width (extended)	3.80 m
Tailswing	1.67 m
Stowed height	3.05 m
Stowed width	2.60 m
Stowed length	11.86 m
Wheelbase	3.81 m
Ground Clearance - axle	30 cm
Ground Clearance - chassis	65 cm
Overall weight (approx.)	20300 kg
Fueltank capacity	117 L

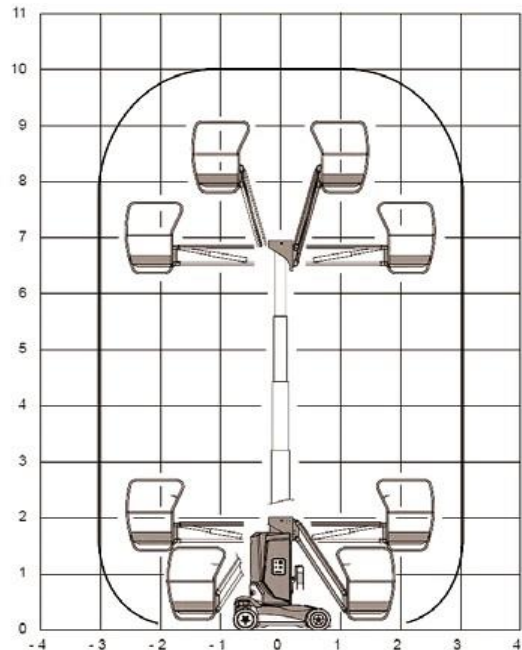
30' HAULOTTE KNUCKLE BOOM LIFT

For more information on this equipment or if you require a free onsite inspection, contact our team

1300 36 2666

BOOM
LOGISTICS

Range Chart



Specifications

Working height	10 m
Platform height	8 m
Platform size	0.70 x 0.99 m
Safe working load	200 kg
Horizontal reach	3.00 m
Wheelbase	1.20 m
Turntable rotation	345 °
Turntable tailswing	zero
Drive speeds stowed	4.50 km/h
Drive speeds raised	0.70 km/h
Gradeability	23 %
Turning radius (outside)	1.88 m
Stowed height	1.99 m
Stowed length	2.65 m
Width	1.00 m
Overall weight (approx.)	2760 kg
Basket rotation	NA
Jib rotation	130 °
Wind speed rating	12.50 m/sec

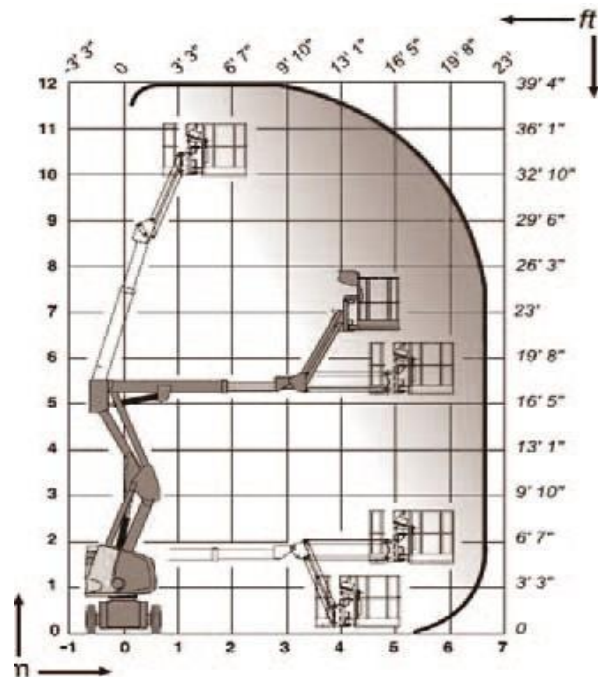
www.boomlogistics.com.au

34' HAULOTTE KNUCKLE BOOM DIESEL WITH FLY BOOM

For more information on this equipment or if you require a free onsite inspection, contact our team

1300 36 2666

Range Chart



Specifications

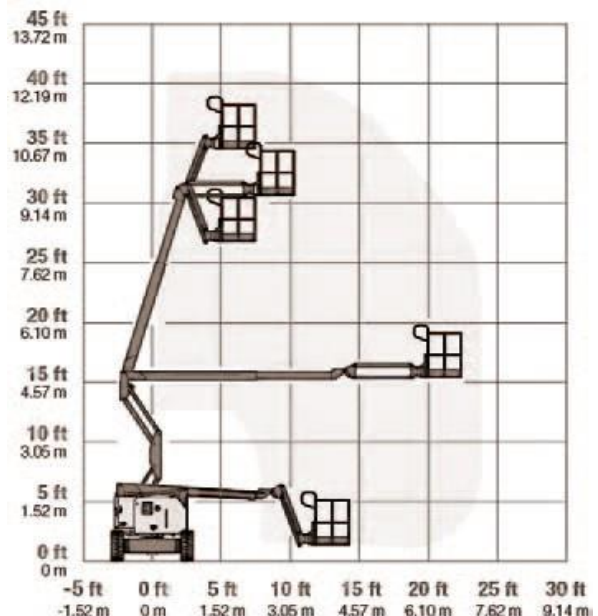
Working height	12.00 m
Platform height	10.00 m
Platform size	0.80 x 1.20 m
Safe working load	230 kg
Horizontal reach	6.70 m
Wheelbase	1.80 m
Turntable rotation	355 °
Turntable tailswing	zero
Drive speeds stowed	4.40 km/h
Drive speeds raised	0.70 km/h
Gradeability (4x4)	25 %
Turning radius (outside)	2.85 m
Stowed height	1.99 m
Stowed length	5.43 m
Width	1.34 m
Overall weight (approx.)	5910 kg
Basket rotation	+ 80 ° / - 90 °
Jib rotation	140 °
Wind speed rating	12.50 m/sec

34' GENIE KNUCKLE BOOM DIESEL WITH FLY BOOM

For more information on this equipment or if you require a free onsite inspection, contact our team

1300 36 2666

Range Chart



Specifications

Working height	12.62 m
Platform height	10.62 m
Platform size	0.76 x 1.42 m
Safe working load	227 kg
Horizontal reach	6.78 m
Wheelbase	1.88 m
Turntable rotation	355 °
Turntable tailswing	zero
Drive speeds stowed	4.40 km/h
Drive speeds raised	1.10 km/h
Gradeability (4x4)	45 %
Turning radius (inside)	1.80 m
Turning radius (outside)	4.11 m
Stowed height	2.06 m
Stowed length	5.66 m
Width	1.85 m
Overall weight (approx.)	4854 kg
Basket rotation	180 °
Jib rotation	139 °
Wind speed rating	12.50 m/sec

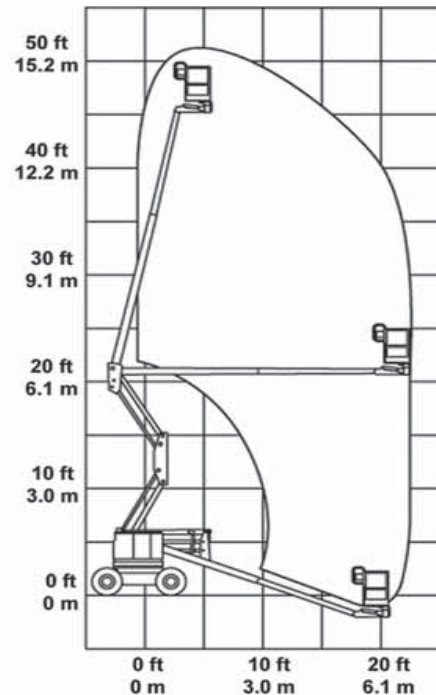
40' JLG KNUCKLE BOOM ELEC

For more information on this equipment or if you require a free onsite inspection, contact our team

1300 36 2666

BOOM
LOGISTICS

Range Chart



Specifications

Working height	15.5 m
Platform height	13.7 m
Platform size	0.76 x 1.22 m
Horizontal reach	7.24 m
Swing	360 °
Safe working load	230 kg
Gradeability	30 %
Tailswing	zero
Wheelbase	2.01 m
Ground clearance	0.22 m
Drivespeed (stowed)	5.20 km/h
Turning radius (inside)	0.61 m
Turning radius (outside)	3.15 m
Stowed height	2.01 m
Stowed length	6.50 m
Width	1.75 m
Overall weight (approx.)	6532 kg

www.boomlogistics.com.au

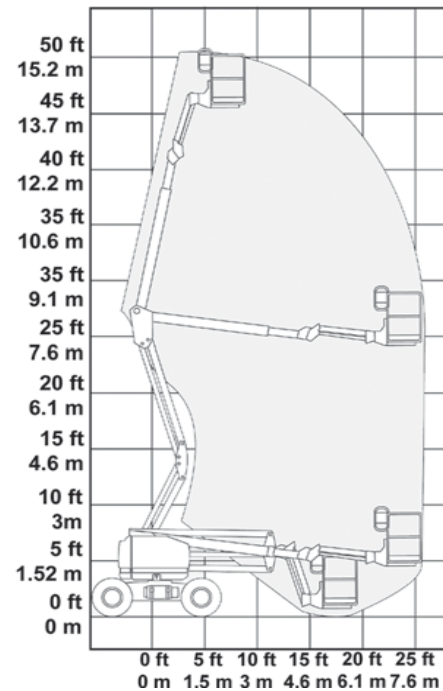
45' KNUCKLE BOOM WITH JIB DIESEL

For more information on this
equipment or if you require a free
onsite inspection, contact our team

1300 36 2666

BOOM
LOGISTICS

Range Chart



Specifications

Working height	15.70 m
Platform height	13.90 m
Platform size	0.77 x 1.83 m
Safe working load	227 kg
Turntable rotation	359 °
Gradeability (4 x 4)	45 %
Turntable tailswing	zero
Platform rotation	160 °
Wheelbase	2.03 m
Drivespeed (stowed)	7.20 km/h
Drivespeed (raised)	0.97 km/h
Turning radius (inside)	1.37 m
Stowed height	2.08 m
Stowed length	6.78 m
Width	2.23 m
Overall weight (approx.)	6668 kg

www.boomlogistics.com.au

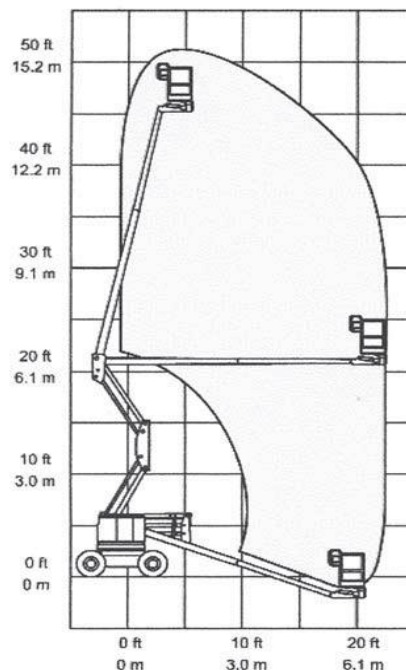
45' KNUCKLE BOOM DIESEL (4 x 4)

For more information on this equipment or if you require a free onsite inspection, contact our team

1300 36 2666

BOOM
LOGISTICS

Range Chart



Specifications

Working height	15.50 m
Platform height	13.70 m
Platform size	0.76 x 1.83 m
Safe working load	227 kg
Horizontal reach	7.00 m
Turntable rotation	359 °
Turntable tailswing	zero
Wheelbase	1.90 m
Gradeability (stowed)	40 %
Platform rotation	160 °
Drivespeed (stowed)	7.72 km/h
Drivespeed (raised)	0.97 km/h
Turning radius (inside)	2.00 m
Turning radius (outside)	4.50 m
Stowed height	2.20 m
Stowed length	5.50 m
Width	1.96 m
Overall weight (approx.)	6536 kg

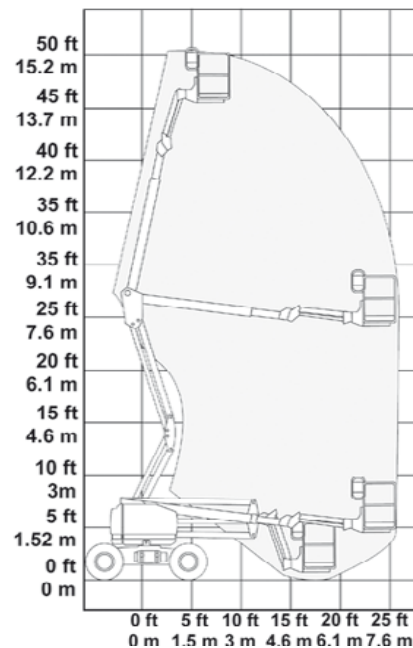
www.boomlogistics.com.au

45' GENIE KNUCKLE BOOM WITH JIB ELEC

For more information on this equipment or if you require a free onsite inspection, contact our team

1300 36 2666

Range Chart



Specifications

Working height	15.92 m
Platform height	13.90 m
Platform size	0.76 x 1.83 m
Safe working load	227 kg
Horizontal reach	7.65 m
Wheelbase	2.03 m
Turntable rotation	359 °
Turntable tailswing	zero
Drive speeds stowed	4.80 km/h
Drive speeds raised	1.10 km/h
Gradeability	30 %
Turning radius (inside)	1.83 m
Turning radius (outside)	4.26 m
Stowed height	2.00 m
Stowed length	6.83 m
Width	1.79 m
Overall weight (approx.)	7394 kg
Basket rotation	160 °
Jib rotation	135 °
Wind speed rating	12.50 m/sec

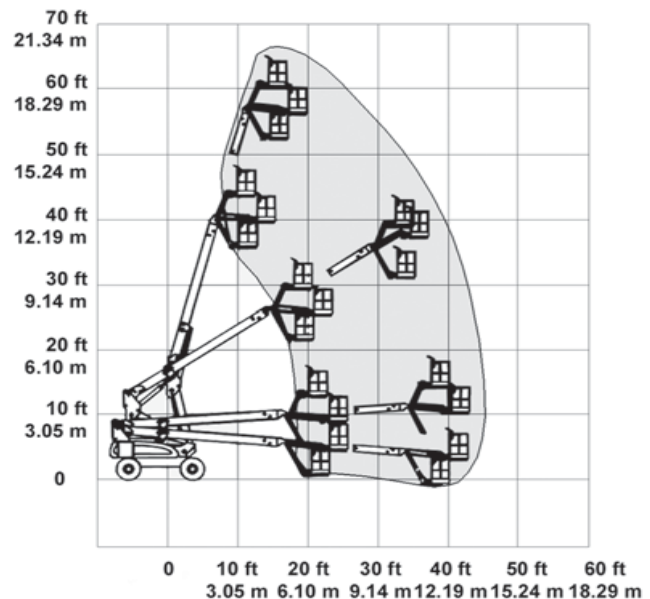
60' JLG KNUCKLE BOOM ELEC

For more information on this equipment or if you require a free onsite inspection, contact our team

1300 36 2666



Range Chart



Specifications

Working height	20.10 m
Platform height	18.30 m
Platform size	0.76 x 1.88 m
Safe working load	230 kg
Horizontal reach	13.19 m
Tailswing	1.22 m
Wheelbase	2.74 m
Gradeability	30 %
Ground clearance (axle)	0.30 m
Drivespeed (stowed)	4.80 km/h
Turning radius (inside)	1.22 m
Turning radius (outside)	4.65 m
Stowed height	2.57 m
Stowed length (jib)	9.37 m
Width	2.44 m
Overall weight (approx.)	7491 kg

www.boomlogistics.com.au

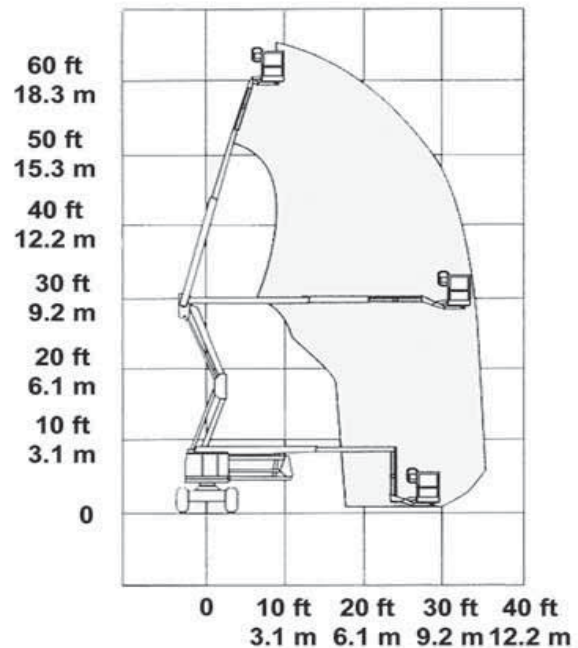
60' GENIE KNUCKLE BOOM ELEC

For more information on this equipment or if you require a free onsite inspection, contact our team

1300 36 2666

BOOM
LOGISTICS

Range Chart



Specifications

Working height	20.10 m
Platform height	18.30 m
Platform size	0.76 x 1.83 m
Safe working load	227 kg
Tailswing	1.22 m
Wheelbase	2.74 m
Gradeability	30 %
Ground clearance (axle)	0.30 m
Drivespeed (stowed)	4.80 km/h
Turning radius (inside)	1.22 m
Turning radius (outside)	4.65 m
Stowed height	2.57 m
Stowed length (jib)	9.37 m
Width	2.44 m
Overall weight (approx.)	6759 kg

www.boomlogistics.com.au

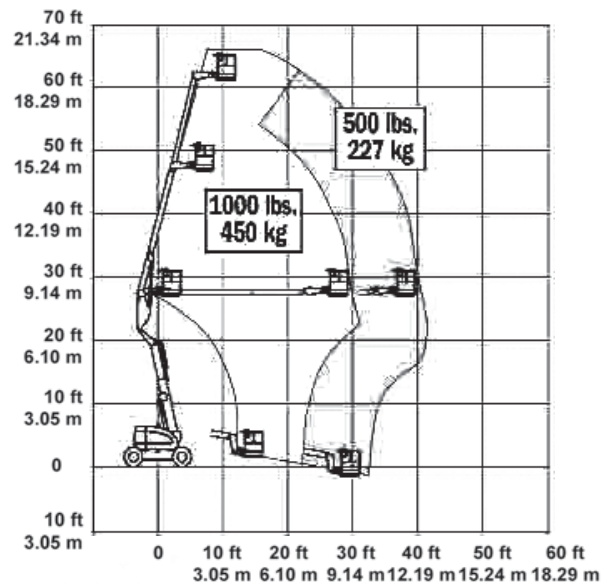
60' JLG KNUCKLE BOOM DIESEL

For more information on this equipment or if you require a free onsite inspection, contact our team

1300 36 2666



Range Chart



Specifications

Working height	20.10 m
Platform height	18.30 m
Platform size	0.76 x 1.88 m
Safe working load	230 kg
Tailswing	1.22 m
Wheelbase	2.74 m
Gradeability	30 %
Ground clearance (axle)	0.30 m
Drivespeed (stowed)	4.80 km/h
Turning radius (inside)	1.22 m
Turning radius (outside)	4.65 m
Stowed height	2.57 m
Stowed length (jib)	9.37 m
Width	2.44 m
Overall weight (approx.)	6759 kg

www.boomlogistics.com.au

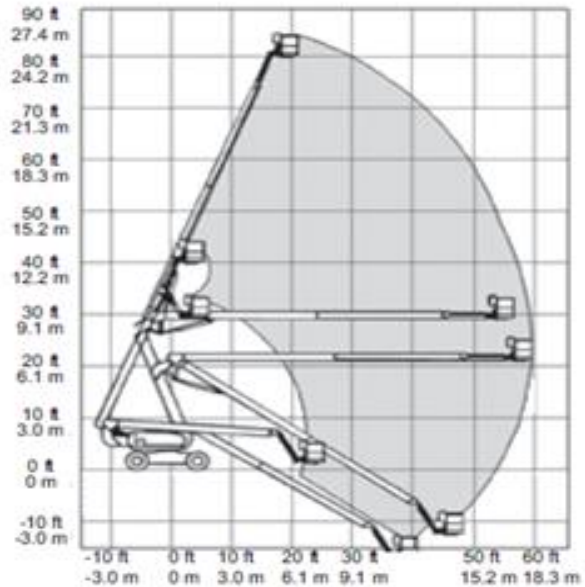
80' GENIE KNUCKLE BOOM LIFT



Range Chart

For more information on this equipment or if you require a free onsite inspection, contact our team

1300 36 2666



Specifications

Working height	26.20 m
Platform height	24.40 m
Platform size	0.91 x 2.44 m
Safe working load	227 kg
Horizontal reach	18.30 m
Turntable rotation	360 ° continuous
Tailswing - elevated position	0.92 m
Platform rotation	2.44 m
Wheelbase	2.74 m
Gradeability 4WD	50 %
Ground clearance	0.30 m
Turning radius (4WD inside)	2.10 m
Turning radius (4WD outside)	4.60 m
Stowed height	3.00 m
Stowed length	11.27 m
Width	2.49 m
Overall weight (approx.)	16850 kg

www.boomlogistics.com.au

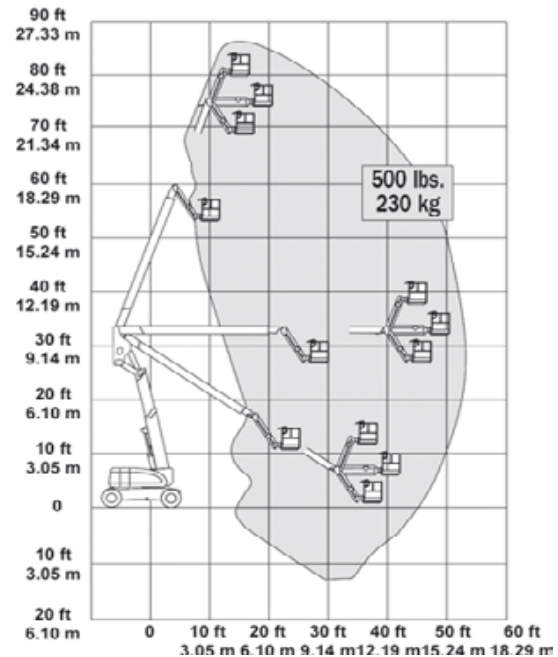
80' JLG KNUCKLE BOOM LIFT

For more information on this equipment or if you require a free onsite inspection, contact our team

1300 36 2666



Range Chart



Specifications

Working height	26.38 m
Platform height	24.38 m
Platform size	0.91 x 2.44 m
Safe working load	230 kg
Horizontal reach	15.80 m
Turntable rotation	360 ° non-continuous
Turntable tailswing	0.76 m
Basket rotation	180 °
Jib rotation	130 °
Wheelbase	3.05 m
Gradeability	45 %
Turning radius (inside)	2.13 m
Turning radius (outside)	4.42 m
Drivespeed (stowed)	4.80 km/h
Stowed height	3.00 m
Stowed length	11.13 m
Width	2.44 m
Overall weight (approx.)	15558 kg
Wind speed rating	12.50 m/sec

www.boomlogistics.com.au

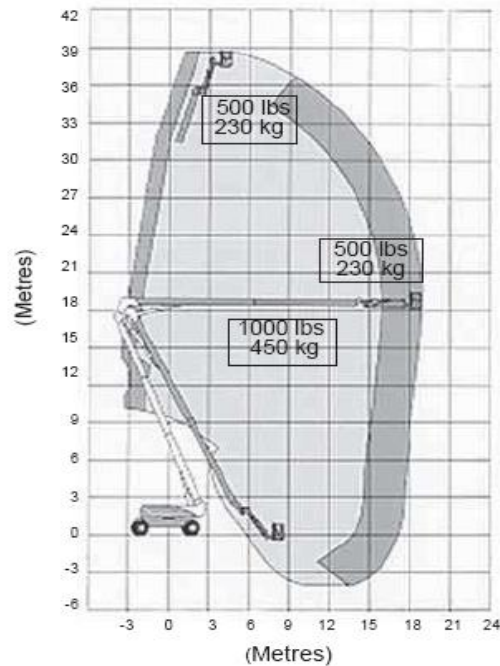
125' JLG KNUCKLE BOOM LIFT

For more information on this equipment or if you require a free onsite inspection, contact our team

1300 36 2666

BOOM
LOGISTICS

Range Chart



Specifications

Working height	39.90 m
Platform height	38.10 m
Platform up-and-over height	18.44 m
Platform size	0.91 x 2.44 m
Safe working load (unrestricted)	450 kg
Safe working load (restricted)	230 kg
Horizontal reach	19.25 m
Turntable rotation	360 ° continuous
Turntable tailswing	0.91 m
Gradeability	45 %
Turning radius (inside - axels ret)	4.39 m
Turning radius (inside - axels ext)	2.44 m
Turning radius (outside - axels ret)	6.86 m
Turning radius (outside - axels ext)	5.89 m
Drivespeed (4WD)	5.2 - 8.30 km/h
Stowed height	3.05 m
Stowed length	11.45 m
Width (axles retracted)	2.49 m
Width (axles extended)	3.81 m
Overall weight (approx.)	19958 kg

www.boomlogistics.com.au

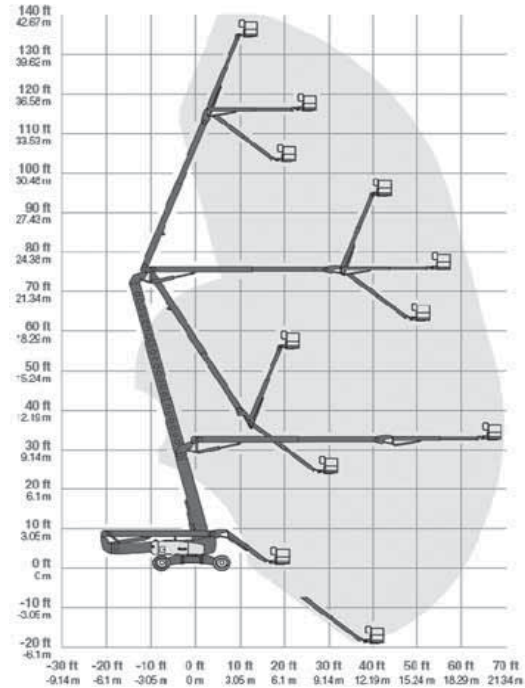
135' GENIE KNUCKLE BOOM LIFT

For more information on this equipment or if you require a free onsite inspection, contact our team

1300 36 2666

BOOM
LOGISTICS

Range Chart



Specifications

Working height	43 m
Platform height	41.15 m
Platform size 6'	0.76 x 1.83 m
Platform size 8'	0.91 x 2.44 m
Safe working load	272 kg
Horizontal reach (riser extended)	18.13 m
Horizontal reach (riser retracted)	21.26 m
Turntable rotation	360 ° continuous
Wheelbase (axles extended)	4.11 m
Wheelbase (axles retracted)	4.72 m
Stowed height	3.07 m
Stowed length	12.93 m
Width (axles extended)	3.94 m
Width (axles retracted)	2.46 m
Overall weight (approx.)	20255 kg
Fuel tank capacity	151.40 L

www.boomlogistics.com.au

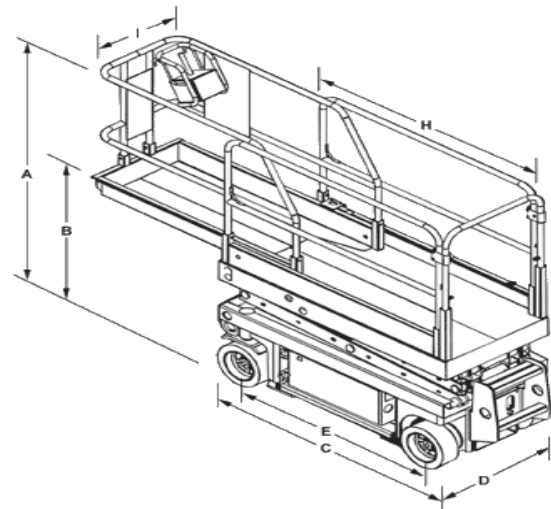
19' SCISSOR LIFT ELEC



Range Chart

For more information on this equipment or if you require a free onsite inspection, contact our team

1300 36 2666



Specifications

	Working height	7.60 m
	Platform height	5.80 m
H	Platform length (extended)	1.58 m
I	Platform width	0.65 m
	Safe working load	227 kg
E	Wheelbase	1.32 m
	Drive speeds (stowed)	4.00 km/h
	Drive speeds (raised)	1.00 km/h
	Gradeability (stowed)	30 %
	Turning radius (inside)	zero
	Turning radius (outside)	1.55 m
A	Stowed height (guardrails)	2.01 m
B	Stowed height (platform)	0.98 m
C	Stowed length	1.83 m
D	Stowed width	0.76 m
	Overall weight (approx.)	1454 kg
	Indoor use only	

www.boomlogistics.com.au

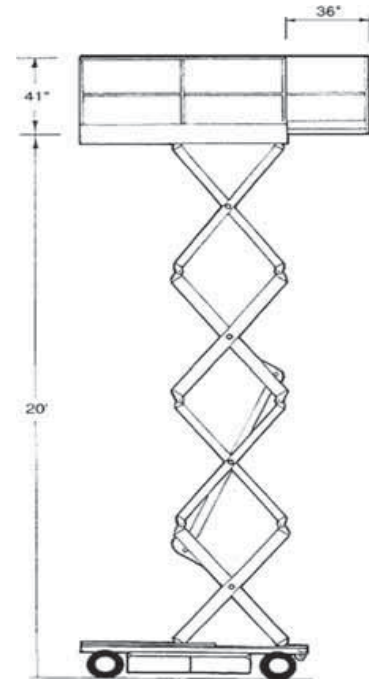
20' NARROW SCISSOR LIFT ELEC

For more information on this equipment or if you require a free onsite inspection, contact our team

1300 36 2666

BOOM
LOGISTICS

Range Chart



Specifications

Working height	7.90 m
Platform height	6.10 m
Platform length	2.26 m
Platform width	0.79 m
Safe working load	363 kg
Wheelbase	1.85 m
Clearance (machine centre)	0.10 m
Clearance (pot hole guard down)	0.02 m
Gradeability	30 %
Turning radius (inside)	zero
Turning radius (outside)	2.34 m
Stowed height (guardrails)	2.00 m
Stowed height (platform)	0.98 m
Stowed length	2.44 m
Stowed width (platform)	0.81 m
Overall weight (approx.)	2044 kg

www.boomlogistics.com.au

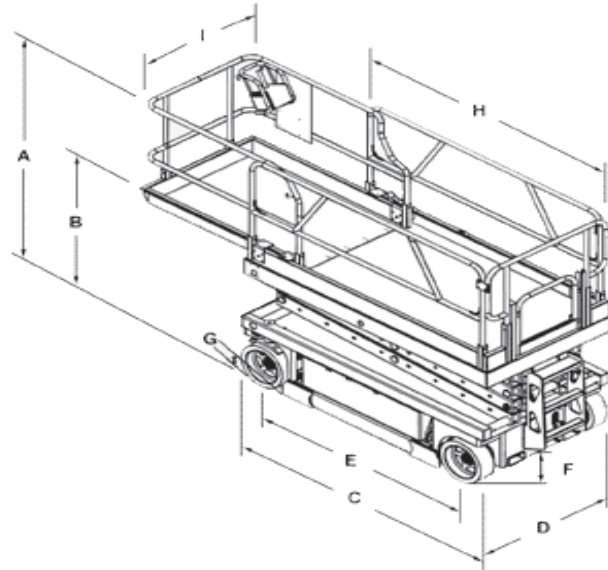
20' WIDE SCISSOR LIFT ELEC



Range Chart

For more information on this equipment or if you require a free onsite inspection, contact our team

1300 36 2666



Specifications

	Working height	8.20 m
	Platform height	6.37 m
	Platform length (extended)	3.26 m
I	Platform width	1.17 m
	Safe working load	544 kg
E	Wheelbase	1.85 m
	Drivespeed (stowed)	3.50 km/h
	Drivespeed (raised)	0.70 km/h
	Gradeability	30 %
	Turning radius (inside)	zero
	Turning radius (outside)	2.33 m
A	Stowed height (guardrails)	1.82 m
C	Stowed length	2.44 m
D	Stowed width (platform)	1.16 m
	Overall weight (approx.)	1951 kg

www.boomlogistics.com.au

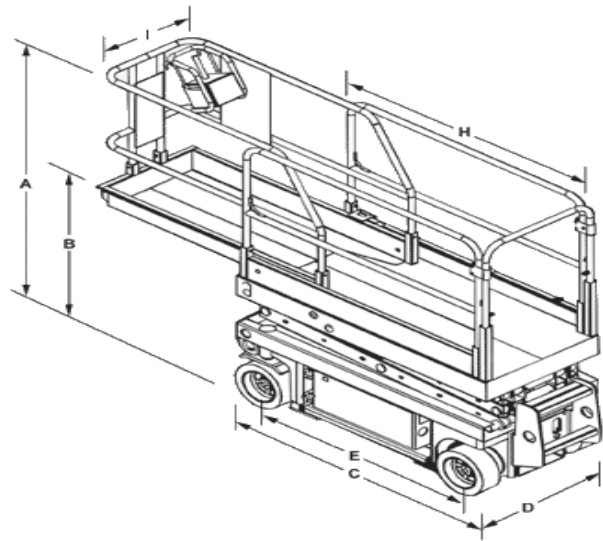
26' SCISSOR LIFT ELEC



Range Chart

For more information on this equipment or if you require a free onsite inspection, contact our team

1300 36 2666



Specifications

	Working height	9.80 m
	Platform height	7.90 m
H	Platform length	2.50 m
I	Platform width	1.50 m
	Safe working load	567 kg
E	Wheelbase	1.90 m
	Ground clearance	0.20 m
	Gradeability (stowed)	40 %
	Turning radius (inside)	3.70 m
	Turning radius (outside)	1.50 m
A	Stowed height (guardrails)	2.40 m
B	Stowed height (platform)	1.20 m
C	Stowed length	2.70 m
D	Width	1.17 m
	Overall weight (approx.)	2100 kg

www.boomlogistics.com.au

26' SCISSOR LIFT SRT



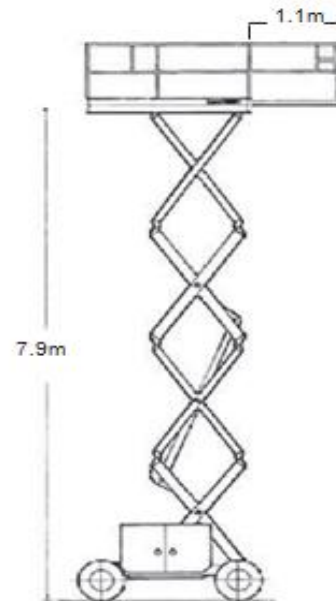
For more information on this equipment or if you require a free onsite inspection, contact our team

1300 36 2666

Specifications

Working height	9.80 m
Platform height	7.90 m
Platform length	2.22 m
Platform width	1.65 m
Safe working load	510 kg
Wheelbase	2.00 m
Guardrail height	1.10 m
Toeboard height	0.15 m
Gradeability (stowed)	35 %
Turning radius (inside)	2.56 m
Turning radius (outside)	4.30 m
Stowed height (guardrails)	2.52 m
Stowed length	2.68 m
Stowed length (with stabilisers)	3.37 m
Width	1.80 m
Overall weight (approx.)	2300 kg
Weight (approx. with stabilisers)	2560 kg

Range Chart



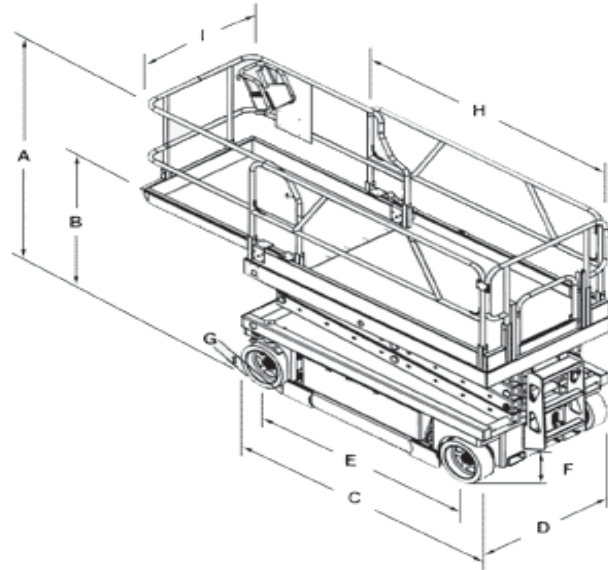
www.boomlogistics.com.au

32' HAULOTTE SCISSOR LIFT ELEC

Range Chart

For more information on this equipment or if you require a free onsite inspection, contact our team

1300 36 2666



Specifications

	Working height	12.00 m
	Platform height	10.00 m
H	Platform length	2.30 m
I	Platform width	1.20 m
	Safe working load	150 kg
F	Ground clearance	0.13 m
E	Wheelbase	1.86 m
	Gradeability	23 %
	Turning radius (inside)	2.50 m
	Turning radius (outside)	0.20 m
A	Stowed height (guardrails)	2.38 m
B	Stowed height (platform)	1.26 m
C	Stowed length	2.31 m
D	Width	1.20 m
	Overall weight (approx.)	2630 kg

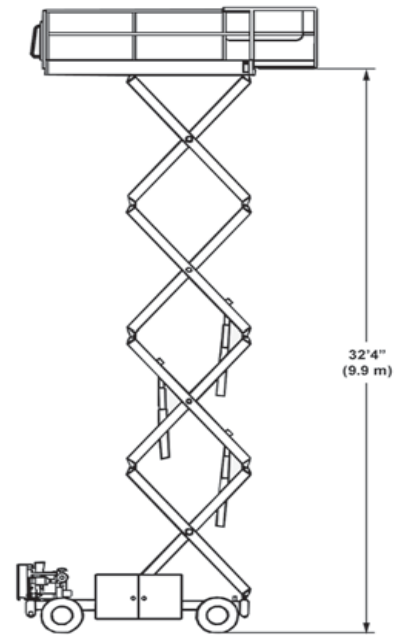
www.boomlogistics.com.au

32' SCISSOR LIFT GENIE SRT

For more information on this equipment or if you require a free onsite inspection, contact our team

1300 36 2666

Range Chart



Specifications

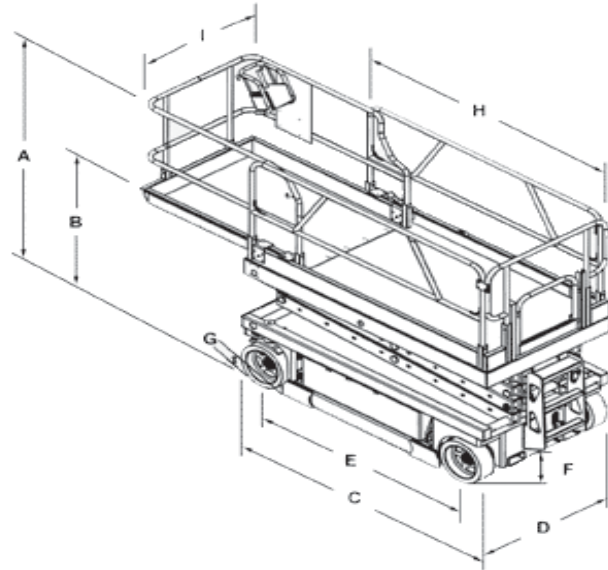
Working height	11.6 m
Platform height	9.80 m
Safe working load	454 kg
Wheelbase	2.30 m
Guardrail height	1.10 m
Toeboard height	0.15 m
Unit length	1.77 m
Unit length (with outriggers)	3.37 m
Gradeability (stowed)	35 %
Turning radius (inside)	2.60 m
Turning radius (outside)	5.00 m
Stowed height (guardrails)	2.50 m
Overall length	3.50 m
Overall width	2.00 m
Overall weight (approx.)	4153 kg

32' GENIE SCISSOR LIFT ELEC

Range Chart

For more information on this equipment or if you require a free onsite inspection, contact our team

1300 36 2666



Specifications

	Working height	11.75 m
	Platform height	9.75 m
H	Platform length	3.18 m
I	Platform width	1.15 m
	Safe working load	318 kg
F	Ground clearance	0.10 m
E	Wheelbase	1.85 m
	Gradeability	25 %
	Turning radius (inside)	zero
	Turning radius (outside)	2.29 m
A	Stowed height (guardrails)	2.50 m
B	Stowed height (platform)	1.30 m
C	Stowed length	2.26 m
D	Width	1.17 m
	Overall weight (approx.)	2812 kg

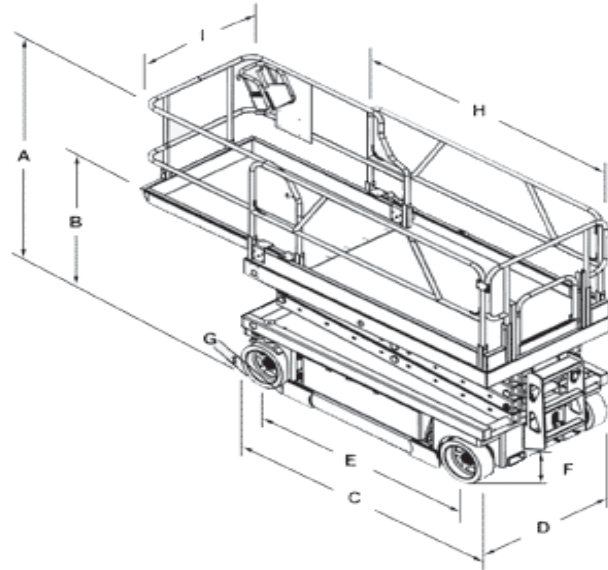
32' JLG SCISSOR LIFT ELEC



Range Chart

For more information on this equipment or if you require a free onsite inspection, contact our team

1300 36 2666



Specifications

	Working height	11.68 m
	Platform height	9.68 m
H	Platform length	2.50 m
I	Platform width	1.12 m
	Safe working load	318 kg
F	Ground clearance	0.13 m
E	Wheelbase	2.09 m
	Gradeability	25 %
	Turning radius (inside)	zero
	Turning radius (outside)	2.41 m
A	Stowed height (guardrails)	2.36 m
B	Stowed height (platform)	1.26 m
C	Stowed length	2.50 m
D	Width	1.17 m
	Overall weight (approx.)	2243 kg

www.boomlogistics.com.au

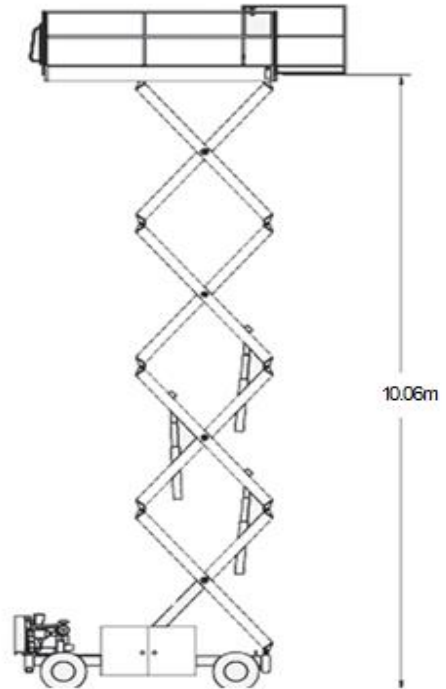
33' SCISSOR LIFT JLG SRT

For more information on this equipment or if you require a free onsite inspection, contact our team

1300 36 2666



Range Chart



Specifications

Working height	11.86 m
Platform height	10.06 m
Platform size	2.18 x 3.81 m
Safe working load	1020 m
Wheelbase	2.95 m
Guardrail height	1.10 m
Ground clearance	0.30 m
Unit length	3.86 m
Unit width	2.39 m
Stowed height (guardrails lowered)	1.97 m
Gradeability	45 %
Turning radius (inside)	2.71 m
Turning radius (outside)	5.93 m
Overall weight (approx.)	8578 kg

www.boomlogistics.com.au



BOON
LOGISTICS

1 300 36 2666

www.boomlogistics.com.au