

# 30M ACM Travel Tower

## HT30M

### FEATURES

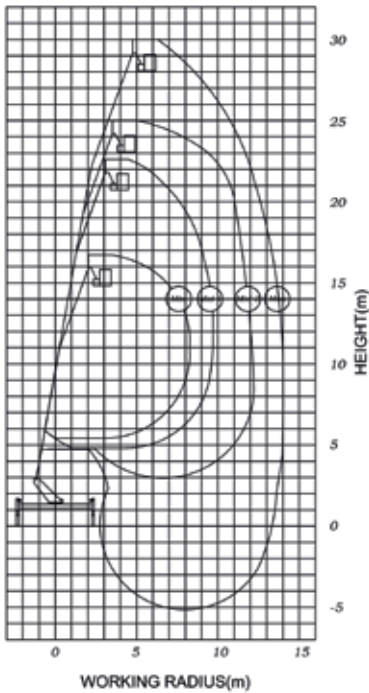
- 4x4 offroad capability
- Variable outrigger positioning system
- Reverse camera
- 240vDC power to basket
- Deck-mounted spotlights
- Non-slip surface on deck

### APPLICATIONS

- Telecommunications infrastructure
- HV transmission tower dressing & line stringing
- Bridge & civil construction maintenance
- Mining & industrial plant maintenance
- Sign installations
- Vegetation management
- Local government & lighting maintenance



## RANGE CHART



# 30M ACM TRAVEL TOWER



Spotlights to illuminate turret and vehicle deck



Reverse camera



240vDC power to basket

## SPECIFICATIONS

<b>Type</b>	Vehicle mounted elevating work platform
<b>Operating Height</b>	Basket floor height: 28.0 metres Working height: 30.0 metres
<b>Max Operating Reach</b>	Rated basket reach: 14.0 metres Working reach: 14.6 metres
<b>Max Working Depth</b>	Below ground level: 7.3 metres
<b>Max Working Radius</b>	Main boom: 14.0 metres Fly boom: 9.0 metres
<b>Basket Dimensions</b>	Width: 0.8 metres Length: 1.6 metres
<b>Max Safe Work Load</b>	250 kilograms
<b>Unit Dimensions (Stowed)</b>	Travelling height: 4.0 metres Travelling width: 2.4 metres Travelling length: 8.6 metres Maximum weight: 13,000 kilograms
<b>Basket Rotation</b>	183 degrees
<b>Slewing</b>	360 degree continuous
<b>Stabilisers</b>	4 hydraulically operated, telescoping stabiliser legs with self-levelling feet Variable individual outrigger positioning system*
<b>Stabiliser Spread</b>	Full outrigger extension: 4.6 x 4.8 metres Minimum variable extension: 2.4 x 4.8 metres
<b>Prime Mover</b>	Mercedes-Benz Atego
<b>Standard</b>	Built to AS1418.10 2011
<b>Windspeed Rating</b>	Operation permitted up to 12.5 metres per second

All details in this spec sheet are accurate as per the manufacturer's data at the time of printing. This literature is not a complete guide to product usage. Further information is available from your Boom Sherrin representative, tel: 136 132. Product specifications may change without notice.

\* Based on the required outrigger position, the Computer System automatically selects the maximum outreach in all directions.

For more information on how **BOOM Sherrin** can assist with your access requirements please contact our National Business Development Manager on 07 3868 6888 or speak to your nearest branch.

# 136 132