

# 42M Multitel Travel Tower

## HT42M

### FEATURES

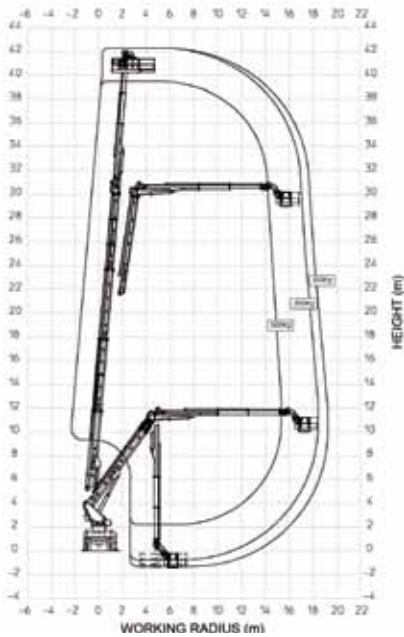
- 6x6 offroad capability
- Reversing camera
- Variable outrigger positioning system
- Extendable basket
- 240V power to basket
- Basket mounted flood-lighting to illuminate work area
- Deck-mounted spotlights
- In-built anemometer & alert

### APPLICATIONS

- Telecommunications infrastructure
- HV Transmission tower dressing & line stringing
- Bridge & civil construction maintenance
- Mining & industrial plant maintenance
- Sign installations
- Vegetation management
- Local government & lighting maintenance



## RANGE CHART



# 42M MULTITEL TRAVEL TOWER



Extendable basket increases work area



Hydraulic tool outlet [200 bar]



240V power to basket

## SPECIFICATIONS

<b>Type</b>	Vehicle mounted elevating work platform
<b>Operating Height</b>	Basket floor height: 40.3 metres Working height: 42.3 metres
<b>Max Operating Reach</b>	Rated basket reach: 19.2 metres Working reach: 19.8 metres
<b>Max Working Depth</b>	Below ground level: 1.6 metres
<b>Max Working Radius</b>	Maximum working load 500kg: 15.3 metres Maximum working load 300kg: 18.4 metres Maximum working load 120kg: 19.2 metres
<b>Basket Dimensions</b>	Width: 0.9 metres Length: 2.5 metres Length extended: 3.6 metres
<b>Max Safe Work Load</b>	500 kilograms
<b>Unit Dimensions (Stowed)</b>	Travelling height: 4.1 metres Travelling width: 2.5 metres Travelling length: 9.7 metres Maximum weight: 30,000 kilograms
<b>Basket Rotation</b>	360 degrees
<b>Slewing</b>	180 degree
<b>Stabilisers</b>	4 hydraulically operated, telescoping stabiliser legs with self-levelling feet Variable individual outrigger positioning system*
<b>Stabiliser Spread</b>	Full outrigger extension: 6.4 x 6.1 metres Minimum variable extension: 2.9 x 6.1 metres
<b>Prime Mover</b>	Scania P360, 6x6
<b>Standard</b>	Built to AS1418.10 2011
<b>Windspeed Rating</b>	Operation permitted up to 12.5 metres per second

All details in this spec sheet are accurate as per the manufacturer's data at the time of printing. This literature is not a complete guide to product usage. Further information is available from your Boom Sherrin representative, tel: 136 132. Product specifications may change without notice.

\* Based on the required outrigger position, the Computer System automatically selects the maximum outreach in all directions.

For more information on how **BOOM Sherrin** can assist with your access requirements please contact our National Business Development Manager on 07 3868 6888 or speak to your nearest branch.

# 136 132